

MERCHANT MARINE ACADEMY OF MACEDONIA  
SCHOOL OF ENGINEERS

FINAL EXAMINATION IN ENGLISH  
Semester A' FEBRUARY 2013

**NAME:** \_\_\_\_\_

**A. Write the component of the diesel engine, which corresponds to the following functions (5p)**

1. It houses the valves
2. It connects the piston to the connecting rod=
3. They support the crankshaft and reduce friction=
4. It connects the piston rod to the connecting rod=
5. It protects the cylinder and reduces friction=

**B. Write the function of the following D.E. components (10p)**

1. The piston \_\_\_\_\_
2. The camshaft \_\_\_\_\_
3. The crankshaft \_\_\_\_\_
4. The crankpin \_\_\_\_\_
5. The water jacket \_\_\_\_\_

**C. Correct only the mistaken sentences (Tick the correct ones) (5p)**

1. The piston rod reciprocates into and out of the stuffing box.
2. A diesel engine is a spark-ignited engine.

3. A 4-stroke D.E. completes a cycle of operation in one revolution of the crankshaft.

4. 2-stroke diesel engines are high-speed engines.

5. The camshaft takes motion from the crankshaft through pins.

**D. Describe in 3-4 sentences how the motion is transmitted from the piston to the propeller (10p)**

---

---

---

---

**E. What do the following acronyms stand for? (5p)**

1. U.M.S. \_\_\_\_\_

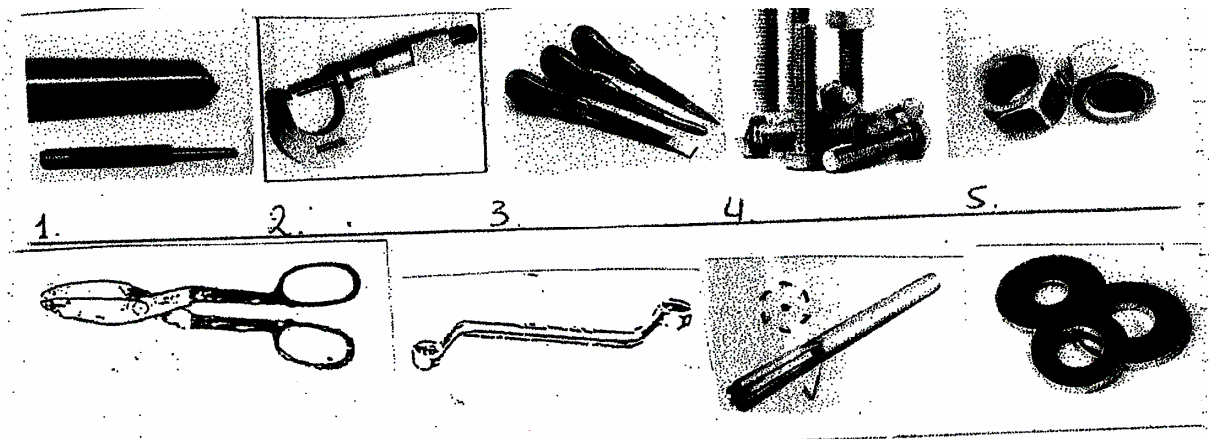
2. D.W.T. \_\_\_\_\_

3. S.T.C.W. \_\_\_\_\_

4. L.S.A. \_\_\_\_\_

5. E.R. \_\_\_\_\_

**F. Label the following tools and answer the question (10p)**



1. Which of the above tools are used beneath nuts?
2. Which ones are used to fasten things together?
3. Which one is used to measure small distances?
4. Which one is used to shape and enlarge a hole?
5. Which one is used to mark centre of a hole to be drilled?

**G. Ask and answer the following questions (10p)**

1. Where / crankshaft / rotate? (Ask) \_\_\_\_\_

\_\_\_\_\_

2. What /the 3<sup>rd</sup> engineer/ do on the daily check round?

(Ask) \_\_\_\_\_

\_\_\_\_\_

3. What / a cadet engineer / learn during his 1<sup>st</sup> training trip?

(Ask) \_\_\_\_\_

\_\_\_\_\_

4. Where / the crew members / go in an emergency?

(Ask) \_\_\_\_\_

\_\_\_\_\_

5. Where / be / the crew members cabins?

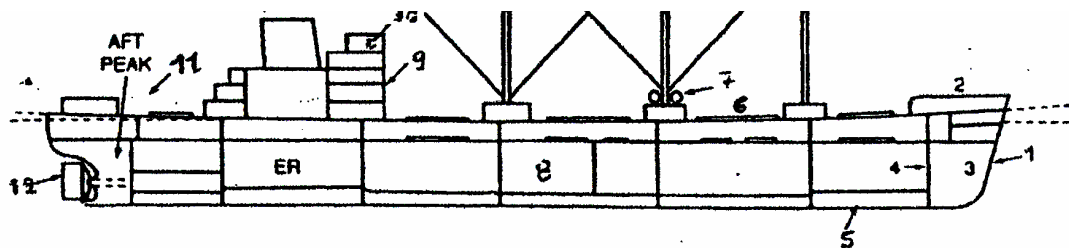
(Ask) \_\_\_\_\_

\_\_\_\_\_

**H. What are the responsibilities of the following crew members? (5p)**

1. The chief engineer \_\_\_\_\_  
\_\_\_\_\_
2. The 2<sup>nd</sup> engineer \_\_\_\_\_  
\_\_\_\_\_
3. The 3<sup>rd</sup> engineer \_\_\_\_\_  
\_\_\_\_\_
4. The fitter \_\_\_\_\_  
\_\_\_\_\_
5. The bosun \_\_\_\_\_  
\_\_\_\_\_

**I. Identify the numbered parts of the vessel (5p)**



1.	4.	7.	10.
2.	5.	8.	11.
3.	6.	9.	12.

**J. Write some types of cargo the following ships carry and how they carry their cargo (5p)**

1. A bulk carrier \_\_\_\_\_
2. A tanker \_\_\_\_\_
3. A container \_\_\_\_\_
4. An OBO \_\_\_\_\_
5. A reefer \_\_\_\_\_

**K. Name the ships which correspond to the following functions (5p)**

1. She carries barges aboard:
2. She tows other ships into and out of ports:
3. She carries vehicles of any kind:
4. She deepens harbours, fairways, anchorages, etc:
5. She breaks a way through ice for other ships to sail:

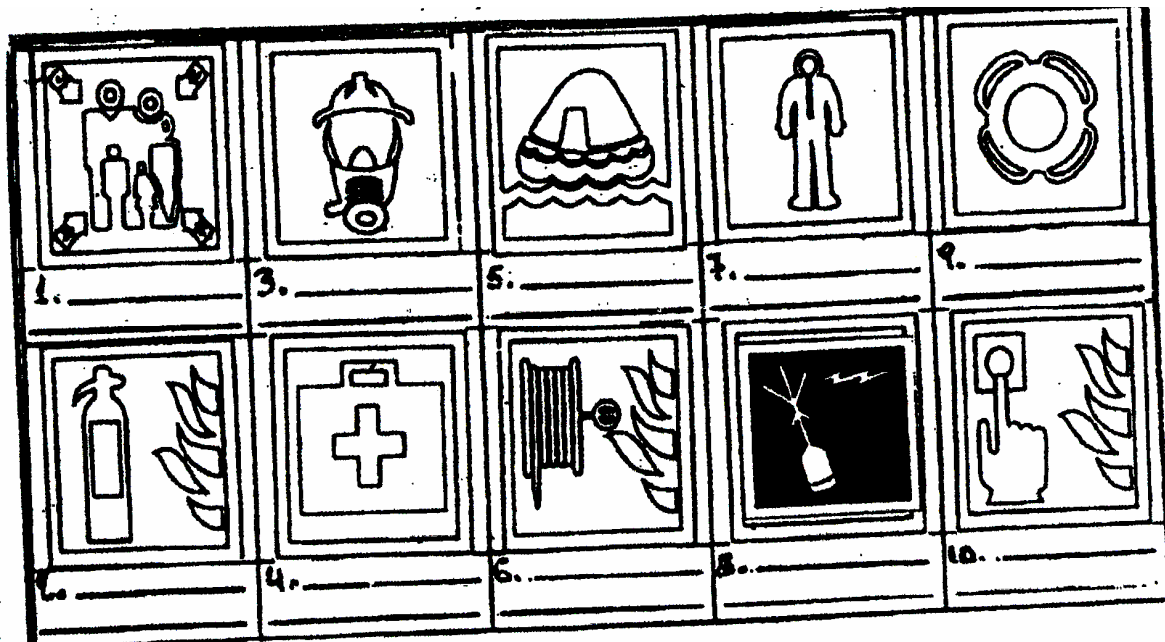
**L. Match the words to their explanation (10p)**

- |                 |   |
|-----------------|---|
| 1. galley       | a. dining room                            |
| 2. combustion   | b. device                                 |
| 3. bunkering    | c. burning                                |
| 4. maintenance  | d. crash                                  |
| 5. messroom     | e. kitchen                                |
| 6. apparatus    | f. supplying with fuel                    |
| 7. draught      | g. to get onboard                         |
| 8. collision    | h. to unload                              |
| 9. to discharge | i. keeping up in good condition           |
| 10. to embark   | j. depth of the ship below the water line |

**M. Mark the odd word off (5p)**

1. maintain, repair, overhaul, overall
2. require, retire, demand, ask
3. assist, help, hire, aid
4. seaway, seaman, mariner, seafarer
5. pile up, stow, stowaway, stack

**N. Name the following life saving equipment (5p)**



**O. Underline the correct choice (5p)**

1. Decks and bulkheads are (compartments – partitions)
2. The fuel is mostly stored in the (fore peak – double bottom) tanks
3. The windlass is on the (poop deck – forecastle) and the mooring winches are on the (poop deck – forecastle)
4. We left Piraeus, crossed (Mediterranean, the Mediterranean) sea, passed through (the Suez, Suez) canal and sailing South East we reached (Philippines, the Philippines).
5. The officer (on, in, at) watch hands (up, over, on) (at, in, on) noon.