

**MERCHANT MARINE ACADEMY OF MACEDONIA
SCHOOL OF ENGINEERS**

Course: Maritime English

Academic year: 2022 – 2023

Exam period: June 2023

Semester: A

Date: 13/6/23

Name:

Student number:

Instructors: M. Tsompanoglou, E. Xenitidou, A. Birbili

FINAL TEST in English

1. Find which of these engine parts do the following: (10 p.)

*crankshaft, bedplate, inlet valve, piston, crosshead pin,
cylinder head, push rod, cylinder liner, guides, crank pin*

- All the valves are fitted in it:
- It supports the whole engine:
- The air is drawn into the cylinder through this valve:
- The camshaft opens the valves with the help of this rod:
- It compresses the air:
- It connects the piston rod to the connecting rod:
- It protects the cylinder by reducing friction:
- The crosshead slides on them:
- It connects the crankshaft to the connecting rod:
- It rotates in the crankcase:

2. Complete the sentences with the correct tool. (10 p.)

*pliers, fitter's vice, taps, Allen key, feeler gauge
spanner, file, mallet, cutting torch, calipers*

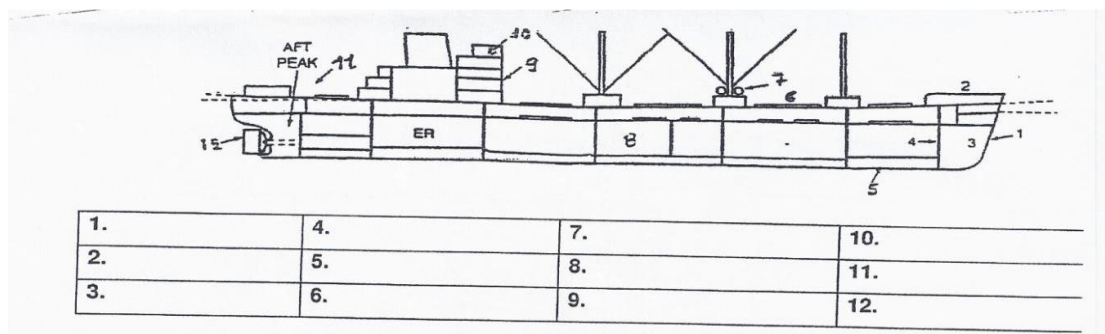
- We smoothen and shape a surface with a _____
- In order to hold an object firmly in its place while work is done, we use a _____
- We use a _____ to tighten or loosen a nut.
- With a _____ we measure very small distances.
- A _____ is a hammer with a large plastic head.
- They are used to cut internal threads: _____
- It cuts or bends wire: _____
- It uses fuel gases and oxygen to cut metal: _____
- A pair of _____ is used to measure thicknesses.
- For hexagonal screws we use a(n) _____

3. Complete the sentences with the following: words (10 p.)

*galley, messroom, starboard, port, laundry, gym,
hospital, cabin, lounge, accommodation*

- The right part of the ship is the _____ side.
- You can have your meals in the _____
- You can wash and dry your clothes in the _____
- You can watch T.V and relax together in the _____
- The left part of the ship is the _____ side.
- The kitchen on a vessel is called the _____
- You can get first aids and basic medical treatment in the _____
- You can sleep in your _____
- You can work out and keep fit in the _____
- In the _____, there are the living quarters and recreation rooms for the use of the crew and passengers.

4. Name the following parts of the vessel: (18 points)



5. Underline the correct choice. (12 p.)

- We use a fire extinguisher to (**warn about a fire, put out a fire, light a fire**)
- (**Lifebuoys, Life rafts, Lifeboats**) are inflatable.
- (**Fueling/ Bunkering/ Loading**) is supplying a ship with fuel.
- IMO stands for International (**Maritime, Marine, Mariner**) Organization.
- My first days onboard are for (**familiarization/ appointment/ watchkeeping**).
- Do you have your (**mariner's/ seaman's/ seafarer's**) book?
- (**Tween decks, Cargo holds, Bulkheads**) are strong vertical walls that divide the ship into different compartments.
- The opening on the deck of a vessel that provides access to the cargo hold is called a (**hatch, hull, tank**).
- A boatswain works in the (**catering department, engine department, deck department**)
- Which of the following is a type of a special duty ship? (**oil tanker, general cargo ship, tug**)
- We keep ropes and paint in the (**galley, bosun's store, radio room**)
- Diesel engines are (**spark-ignited engines, compression-ignited engines, external-combustion engines**)

6. Match the different types of vessels with their descriptions (14 p.)

Bulk carriers, Drill ships, Ro - Ro, General cargo ships, Tugs, Ferries, LNG carriers, Pilot boats, Reefers, Container ships, Tankers, Cruisers, Icebreakers, Lightships

- They serve as a beacon for navigation: _____
- They carry bulk cargo, like grain: _____
- They offer luxury and comfort to holiday makers: _____
- They carry vehicles and trucks: _____
- They carry cargo in break bulk form: _____
- They carry liquid cargo in tanks: _____
- They carry cars and passengers: _____
- They carry explosive gas at freezing temperatures: _____
- They transfer the pilot on board the vessel: _____
- They are used in cold places, where there is ice: _____
- They carry refrigerated cargo: _____
- They have more power than a medium-sized vessel and can manoeuvre in any direction: _____
- They dig the bottom of the sea: _____
- They carry cargo in special "boxes": _____

7. Find which of the following crew members are responsible for the following duties: (11 p.)

chief officer, 2nd engineer, wiper, bosun, 2nd officer, oiler, messmate, chief engineer, captain, fitter, engine cadet

- He/she is responsible for loading and discharging cargo:
- He/she is responsible for the crew and the safety of the ship:
- He/she is the head of the engine department:
- He/she serves meals to officers and crew:
- He/she follows orders of the officers in the E/R:
- He/she supervises the O/S and the A/B:
- He/she lubricates and greases parts of the machinery:
- He/she keeps machinery and engine spaces clean:
- He/she keeps engine room crew overtime:
- He/she cuts and welds pipes:
- He/she is the navigational officer:

8. Name the parts in the following diagram of a 2-stroke diesel engine. (15 p.)

