

**MERCHANT MARINE ACADEMY OF MACEDONIA  
SCHOOL OF ENGINEERS**

**Course: Maritime English**

**Academic year: 2022 – 2023**

**Exam period: September 2023**

**Semester: A**

**Date: 12/9/23**

**Name:**

**Student number:**

**Instructors: M. Tsompanoglou, E. Xenitidou, A. Birbili**

**FINAL TEST in English**

**1. Underline the correct choice. (12 p.)**

- We smoothen and shape a surface with a (**scraper, reamer, file**).
- In order to cut internal threads we use (**cutters, taps, snips**).
- We use (**a cold chisel, a centre punch, a bolt**) to mark an indentation at the location of the centre of a hole to be drilled.
- A (**bit, rasp, mallet**) is a hammer with a large plastic head.
- My first days onboard are for (**familiarization/ appointment/ watchkeeping**).
- Do you have your (**mariner's/ seaman's/ seafarer's**) book?
- (**Fueling/ Bunkering/ Loading**) is when we take fuel for the ship.
- ETA stands for (**Expected/ Estimated/ Extended**) Time of Arrival.
- IMO stands for International (**maritime, marine, mariner**) Organization.
- (**Tween decks, cargo holds, bulkheads**) are strong vertical walls that divide the ship into different compartments.
- The opening on the deck of a vessel that provides access to the cargo hold is called a (**hatch, hull, tank**).
- Diesel engines are (**spark-ignited engines, compression-ignited engines**).

**2. Find which of these engine parts do the following: (10 p.)**

*inlet valve, piston, crosshead pin, crankshaft, bedplate,  
crank pin, cylinder head, push rod, cylinder liner, guides*

- It supports the whole engine:
- The air is drawn into the cylinder through this valve:
- The camshaft opens the valves with the help of this rod:
- It compresses the air:
- It connects the piston rod to the connecting rod:
- It protects the cylinder by reducing friction:
- The crosshead slides on them:
- It connects the crankshaft to the connecting rod:
- It rotates in the crankcase:
- All the valves are fitted in it:

### 3. Write the name of the following tools. (10 p.)



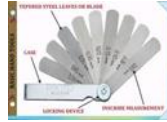
.....

.....

.....

.....

.....



.....

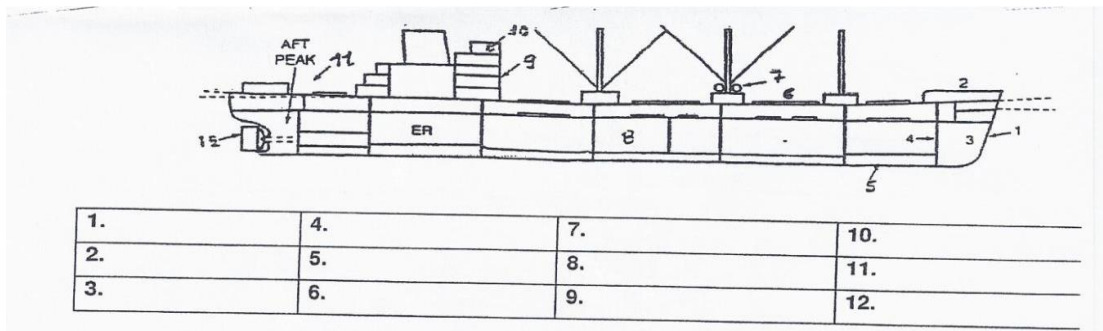
.....

.....

.....

.....

### 4. Name the following parts of the vessel: (18 points)



### 5. Complete the following descriptions. The 1<sup>st</sup> letter is given (10 p.)

- The Captain can navigate the vessel in the **b**\_\_\_\_\_ **e**.
- You can watch T.V and relax together in the **l**\_\_\_\_\_ **e**.
- You can get first aids and basic medical treatment in the **h**\_\_\_\_\_ **l**.
- The right part of the ship is the **s**\_\_\_\_\_ **d** side.
- You can have lunch in the **m**\_\_\_\_\_ **m**.
- You can sleep in your **c**\_\_\_\_\_ **n**.
- The left part of the ship is the **p**\_\_\_\_\_ **t** side.
- The kitchen on a vessel is called the **g**\_\_\_\_\_ **y**.
- You can work out and keep fit in the **g**\_\_\_\_\_.
- You can wash and dry your clothes in the **l**\_\_\_\_\_ **y**.

**6. Match the different types of vessels with their definitions (15 p.)**

*Pilot boats, Reefers, Containers, Tankers, Drill ships, Vehicle-carriers, Paxcar ferries, LNG, Bulk carriers, Tugs, Icebreakers, Cable ships, Cruisers, General cargo ships, Lightships*

- They carry liquid bulk cargo, such as crude oil, diesel oil, etc.:
- They crush a way through ice:
- They carry passengers and cars:
- They carry bulk cargo such as grain, fertilizers, ore etc.:
- They are vessels with huge stern doors, mainly for cars and trucks:
- They dig the bottom of the sea looking for new oil or gas wells:
- They offer luxury and comfort to holiday makers:
- They carry any type of cargo in break-bulk form:
- They lay cables on the bottom of the sea:
- They serve as a beacon for navigation:
- They carry any type of cargo in "boxes":
- They carry refrigerated cargo:
- They tow other vessels:
- They carry liquified gas at freezing temperatures:
- They help other ships enter or leave a port safely:

**7. Find which of the following crew members are responsible for the following duties: (10 points)**

*oiler, chief mate, wiper, bosun, 2nd mate, apprentice engineer, 2<sup>nd</sup> engineer, chief engineer, Captain, fitter*

- Is in charge of the ship's cargo:
- Responsible for aspects of navigation:
- Head of the engine department:
- Keeps engine room crew overtime:
- Follows commands of the officers in the E/R:
- Supervises the O/S and the A/B:
- Lubricates and greases parts of the machinery:
- Cuts and welds pipes:
- Keeps machinery and engine spaces clean:
- Pays the crew:

8. Name the parts in the following diagram of a 2-stroke diesel engine. (15 p.)

