

**MERCHANT MARINE ACADEMY OF MACEDONIA  
SCHOOL OF ENGINEERS**

**Course: Maritime English**

**Academic year: 2018 – 2019**

**Semester: A**

**Name:**

**Student number:**

**Instructors: Dr M. Tsompanoglou**

**Exam period: February 2019**

**Date: 14/2/19**

**FINAL TEST in English (Retakes)**

**1. Match the following words. (10 p.)**

**(Μεταφέρετε τις λέξεις από τη δεύτερη στήλη στην πρώτη)**

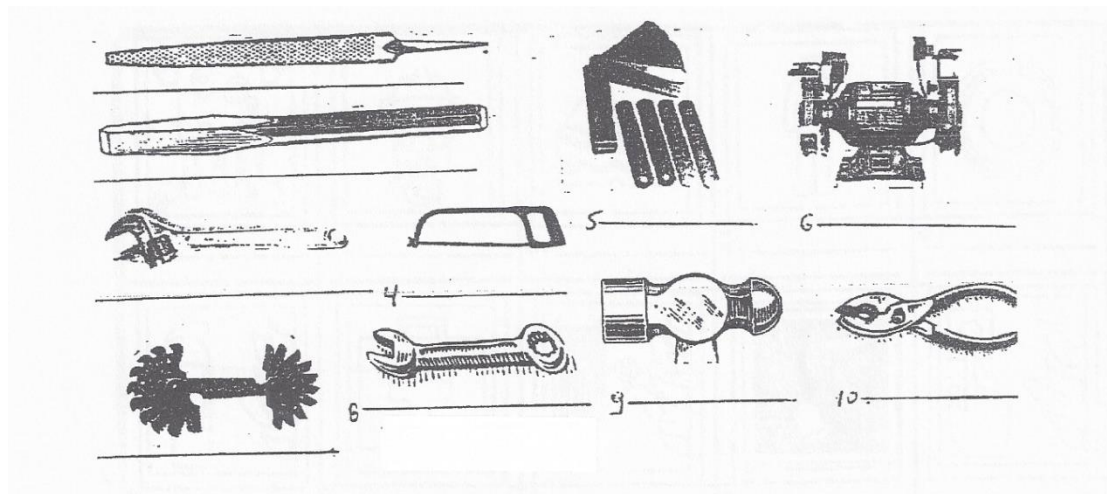
Crank	Cover
Cylinder	Rod
Exhaust	Web
Crank	Box
Hatch	Pin
Main	Valve
Poop	Liner
Inlet	Valve
Stuffing	Deck
Connecting	Deck

**2. Match the following parts of a diesel engine with their functions. (10 p.)**

**(Μεταφέρετε τις λέξεις από την πρώτη στήλη στην δεύτερη)**

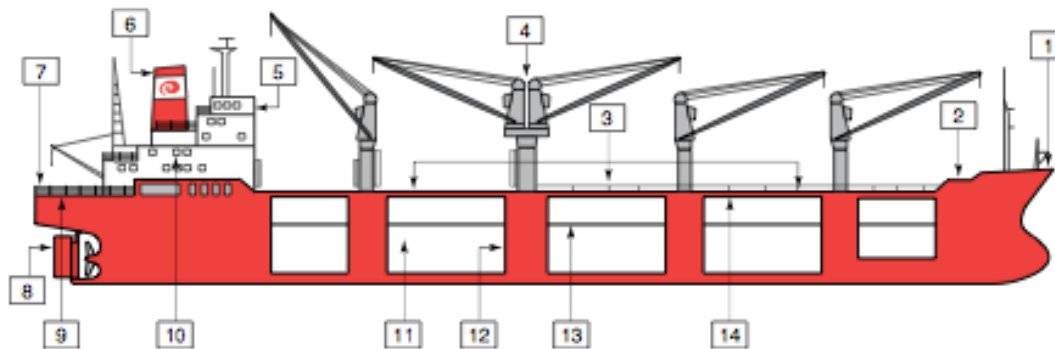
crankshaft	opens the valves:
camshaft	reduces friction:
piston	compresses the air:
cylinder liner	supports the whole engine:
piston rod	reciprocates in the stuffing box:
connecting rod	rotates and gives motion to the propeller:
bedplate	gives rotating motion to the crankshaft:
crosshead pin	connects the piston rod to the connecting rod:
piston pin	connects the piston to the connecting rod:
crank pin	connects the connecting rod to the crankshaft:

**3. Identify the following tools. (15 points)**



**4. Name the following parts of the vessel: (14 points)**

- |     |      |
|-----|------|
| 1.: | 8.:  |
| 2.: | 9.:  |
| 3.: | 10.: |
| 4.: | 11.: |
| 5.: | 12.: |
| 6.: | 13.: |
| 7.: | 14.: |



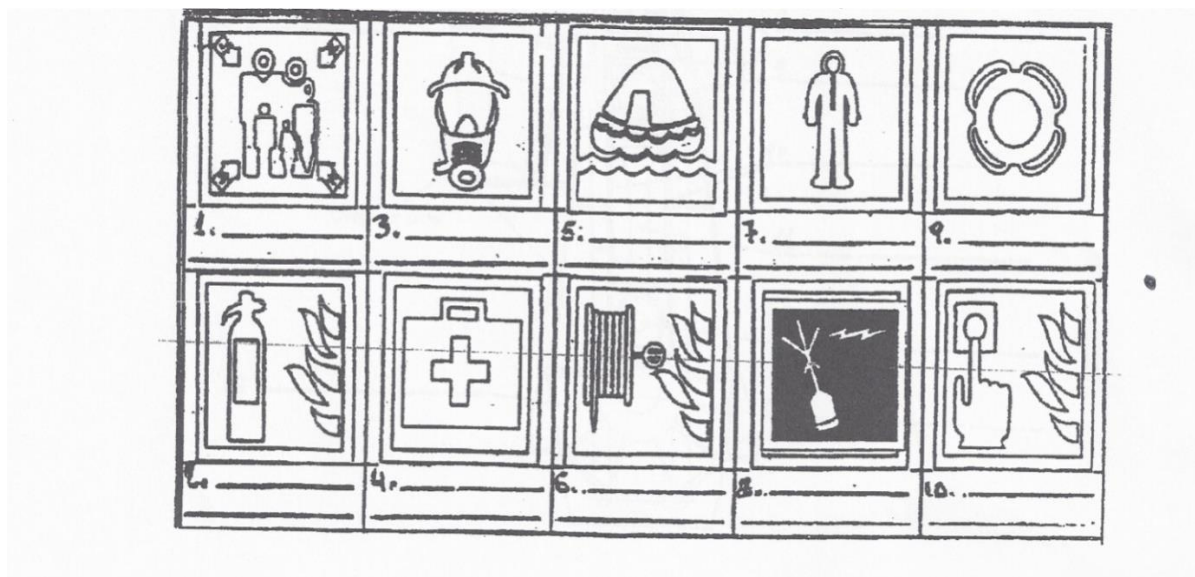
**5. Find the kinds of vessels that do the following. (15 p.)**

*Lightship, Tug, General cargo ship, Bulk carrier, Cable layer, Pilot tender, LPG, Reefer, Container, Ro-Ro, SAR vessel, Clean-product tanker, Crude carrier, Icebreaker, Paxcar ferry*

- Carries refrigerated cargo: .....
- Carries liquified petroleum gas: .....
- Assists with the pilotage of another vessel: .....
- Carries loose cargo such as grain, iron, ore etc.: .....
- Carries vehicles: .....

- Tows other vessels: .....
- Any type of packaged cargo or pieces of machinery: .....
- Carries crude oil: .....
- Carries refined petroleum products: .....
- Lays cables on the bottom of the sea: .....
- Crushes a way through ice: .....
- Searches and rescues ships in distress: .....
- It carries passengers and cars: .....
- Serves as a beacon for navigation: .....
- Carries any type of cargo in "boxes": .....

**6. Name the following life saving equipment. (10 points)**



**7. Find which of the following crew members are responsible for the following duties: (11 points)**

*Master, fitter, oiler, chief engineer, chief officer, wiper, bosun, 2<sup>nd</sup> engineer, 2<sup>nd</sup> officer, engine cadet*

- Representative of the company
- Head of the deck department:
- Corrects and updates the charts:
- Decides which engine repairs need to be done:
- Keeps the engine room crew overtime:
- Supervises the O/S and the A/B:
- Lubricates and greases parts of the machinery:
- Cuts and welds pipes:
- Cleans the engine room:
- Learns about bunkering:
- Responsible for the safety of the crew and the ship:

8. Name the parts in the following diagram of a 2-stroke diesel engine. (15 points)

