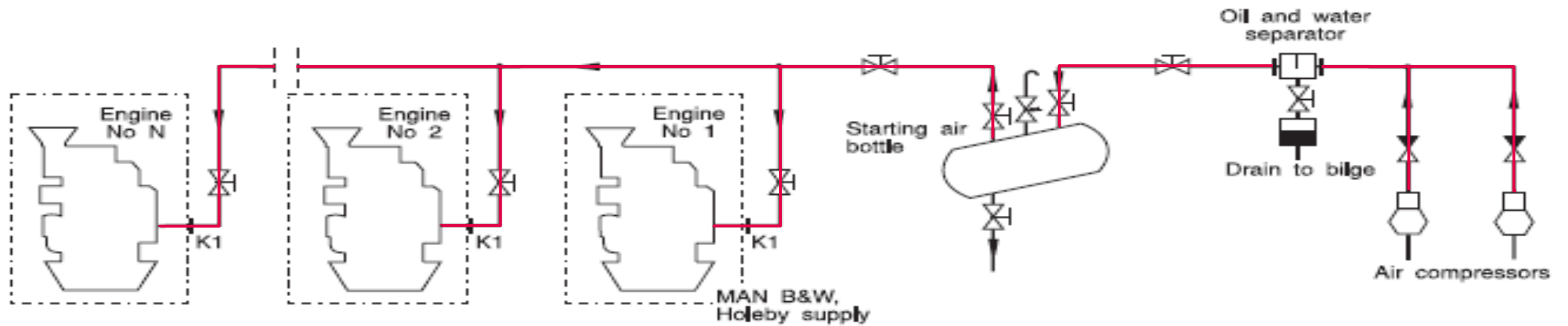


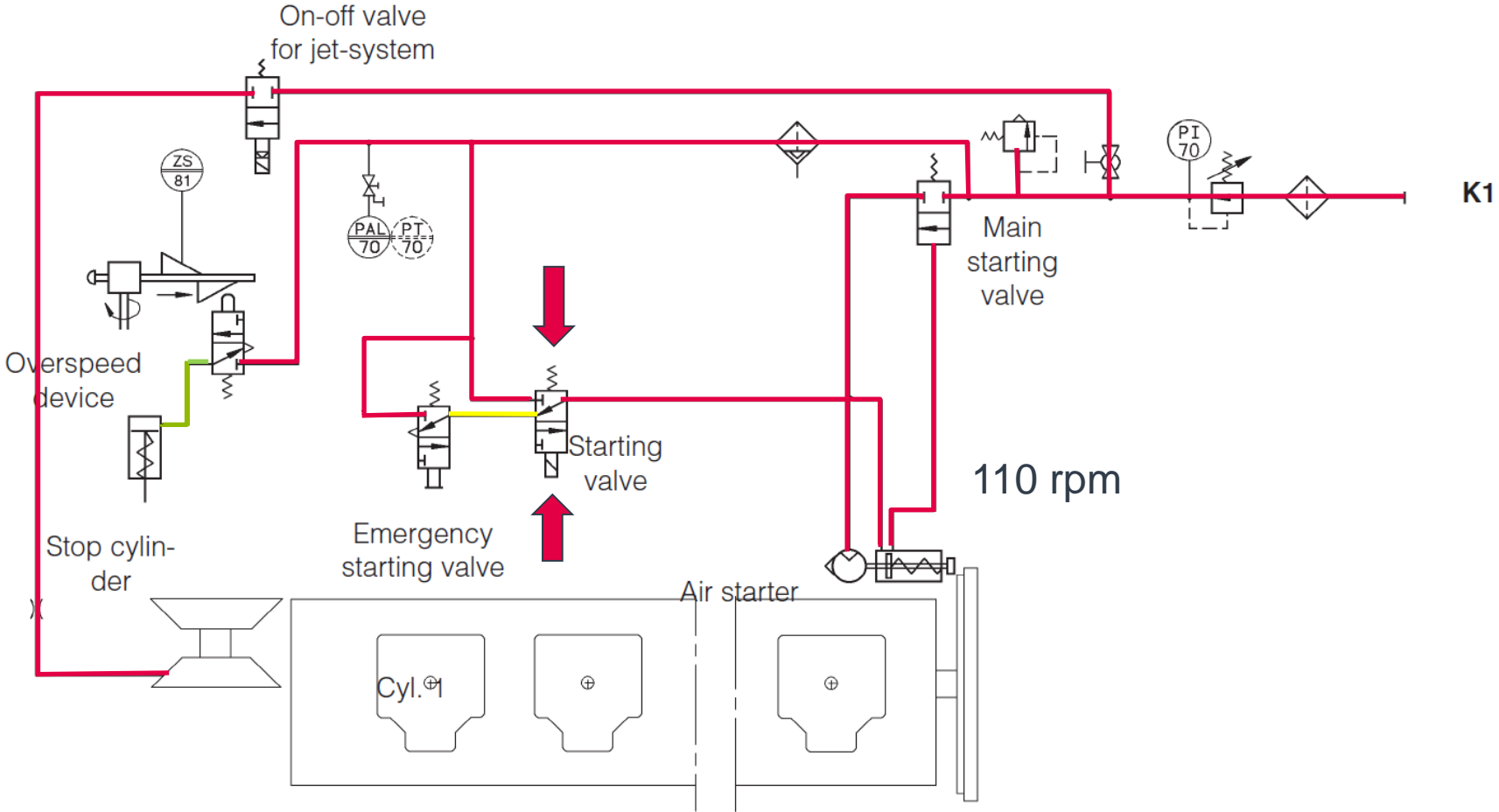
# L 28/32H Compressed Air System



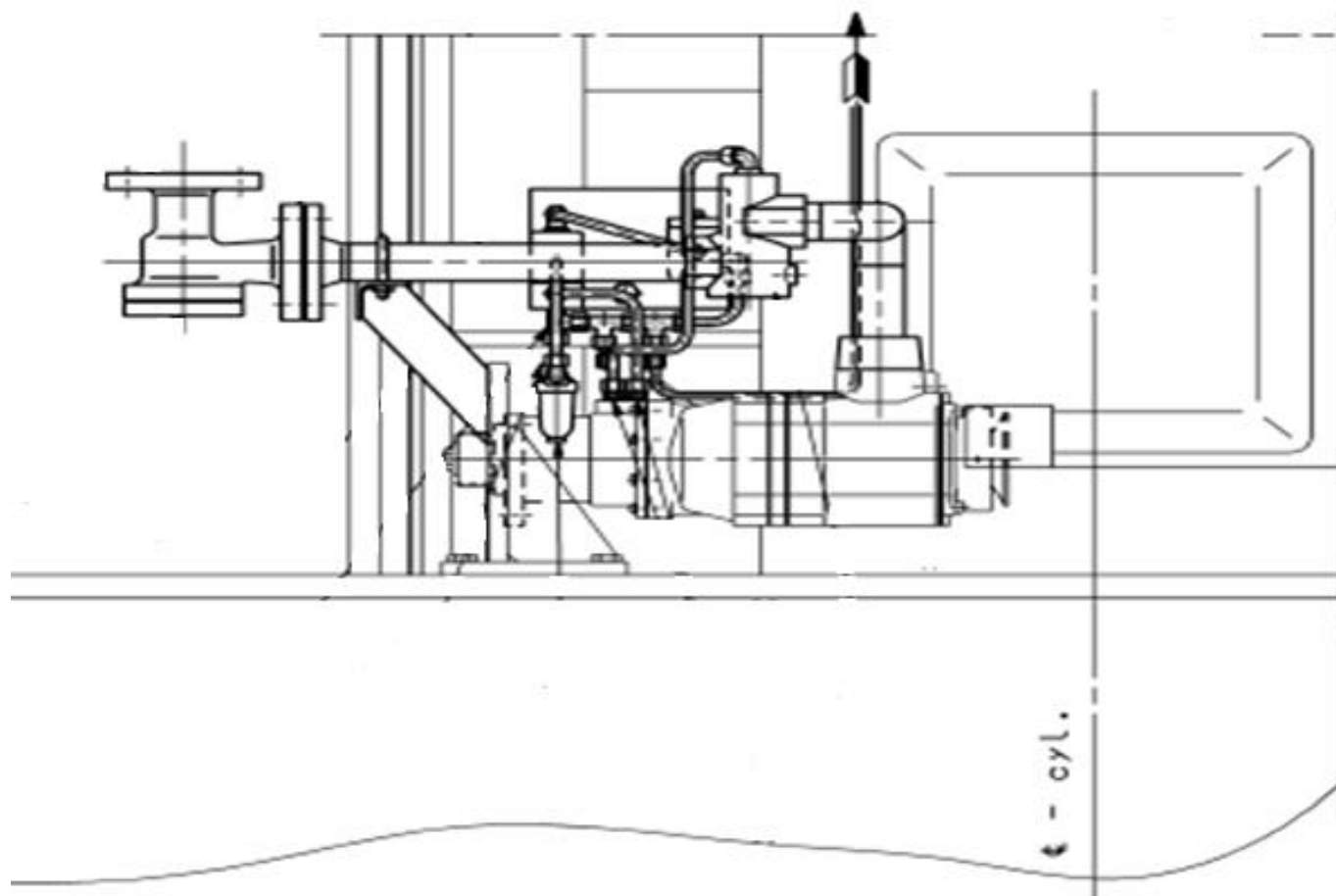
# L23/30H & L28/32H Compressed air system



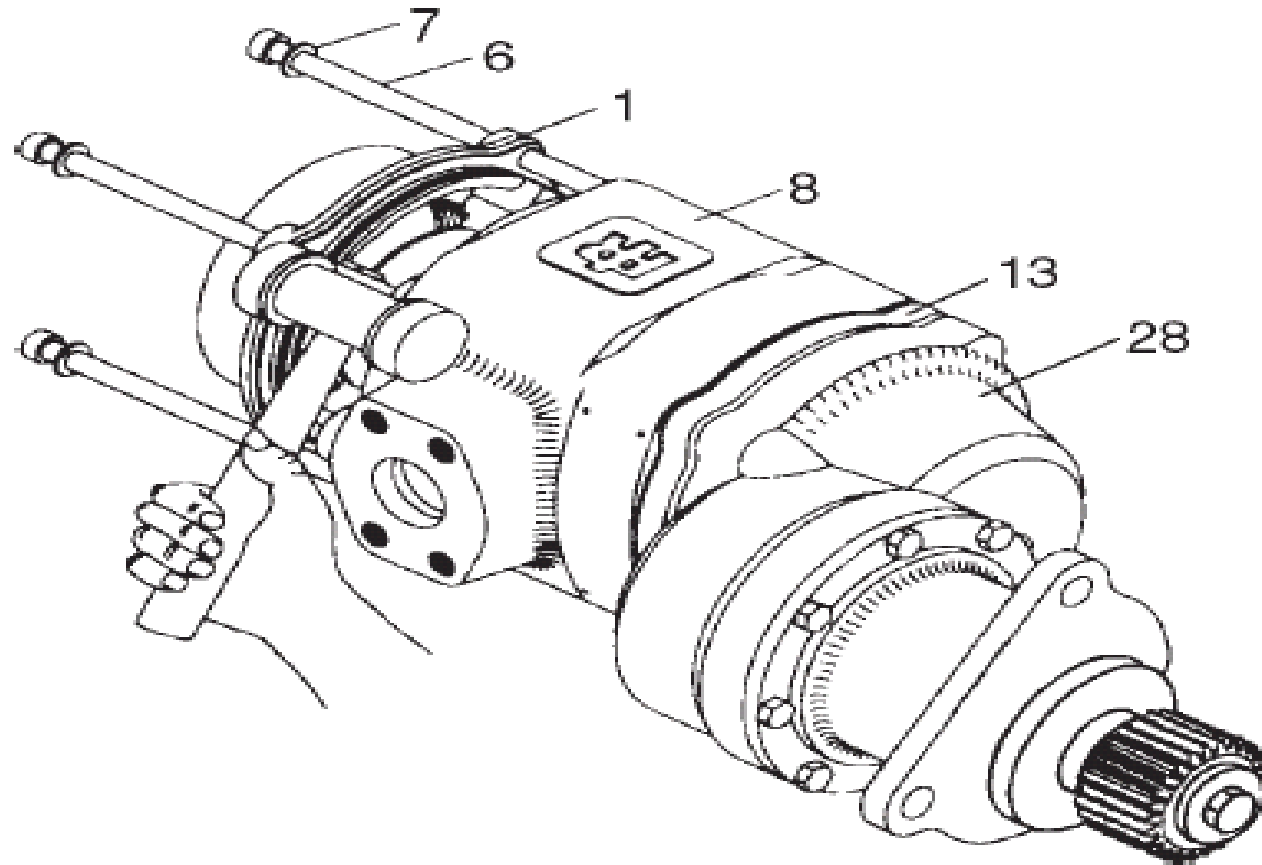
# L 28/32H Compressed Air System



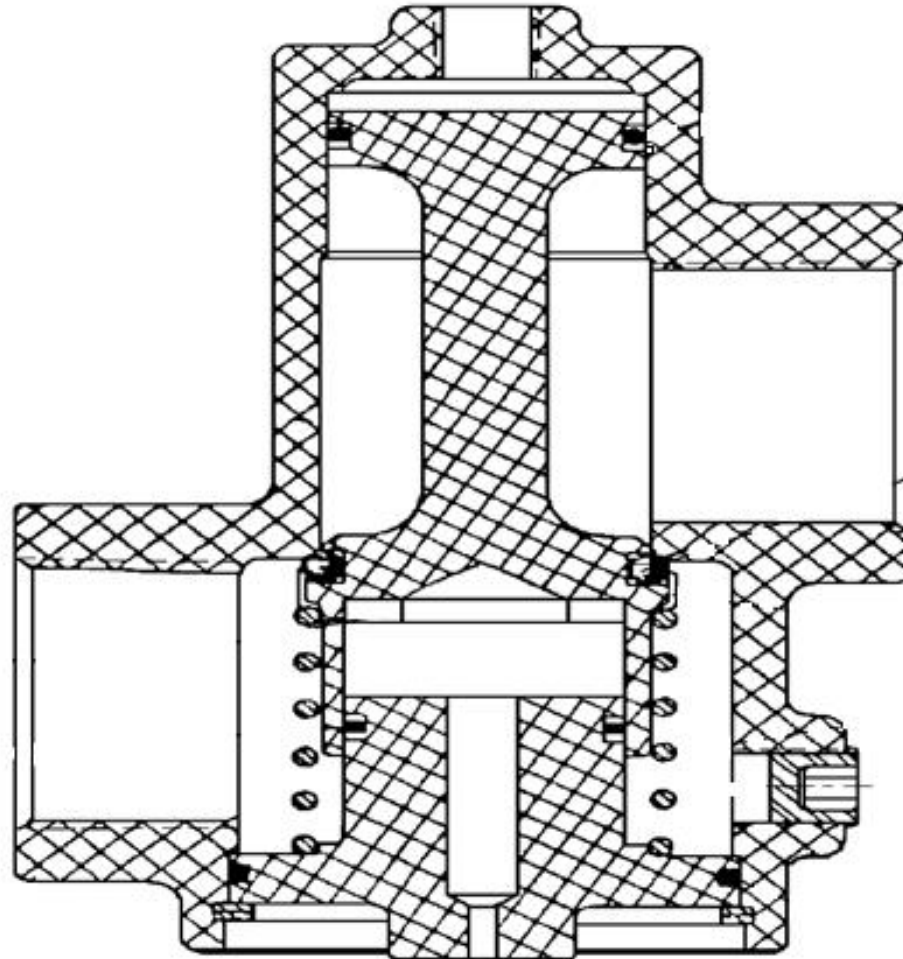
# L 28/32H Compressed Air System



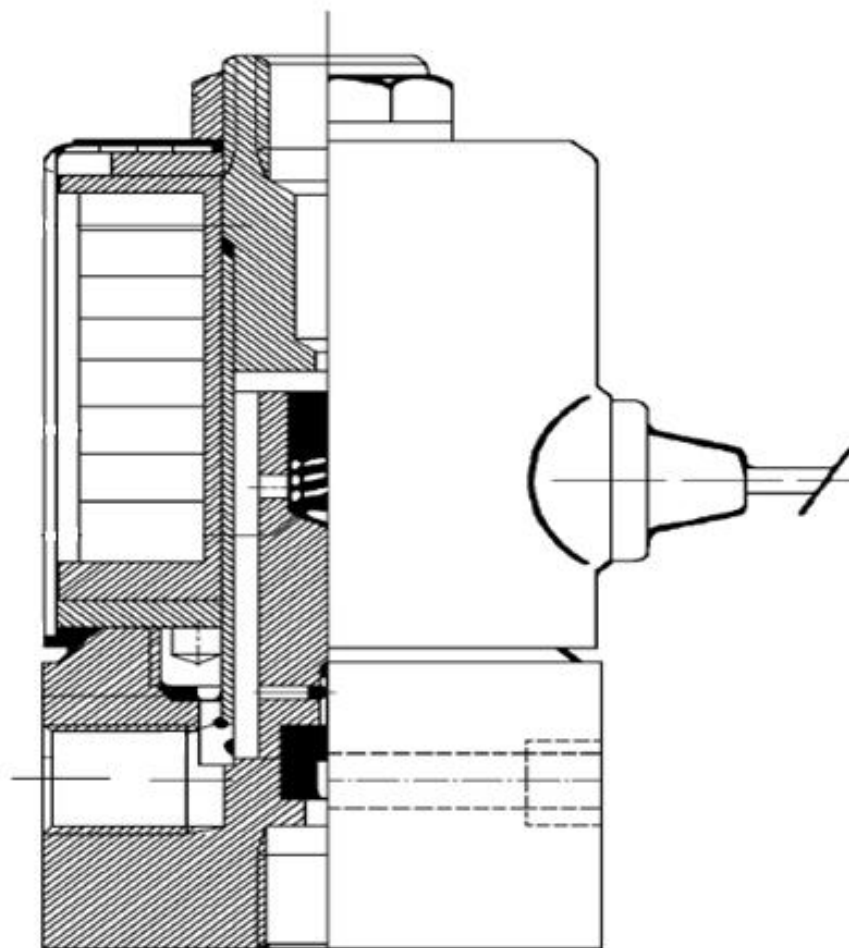
# L 28/32H Compressed Air System



# L 28/32H Compressed Air System – main starting valve



# L 28/32H Compressed Air System



# Disclaimer



All data provided in this document is non-binding.

This data serves informational purposes only and is especially not guaranteed in any way. Depending on the subsequent specific individual projects, the relevant data may be subject to changes and will be assessed and determined individually for each project. This will depend on the particular characteristics of each individual project, especially specific site and operational conditions.



# Do you have any more questions?



**Joe Bloggs**

[Contact details]

**Joe Bloggs**

[Contact details]