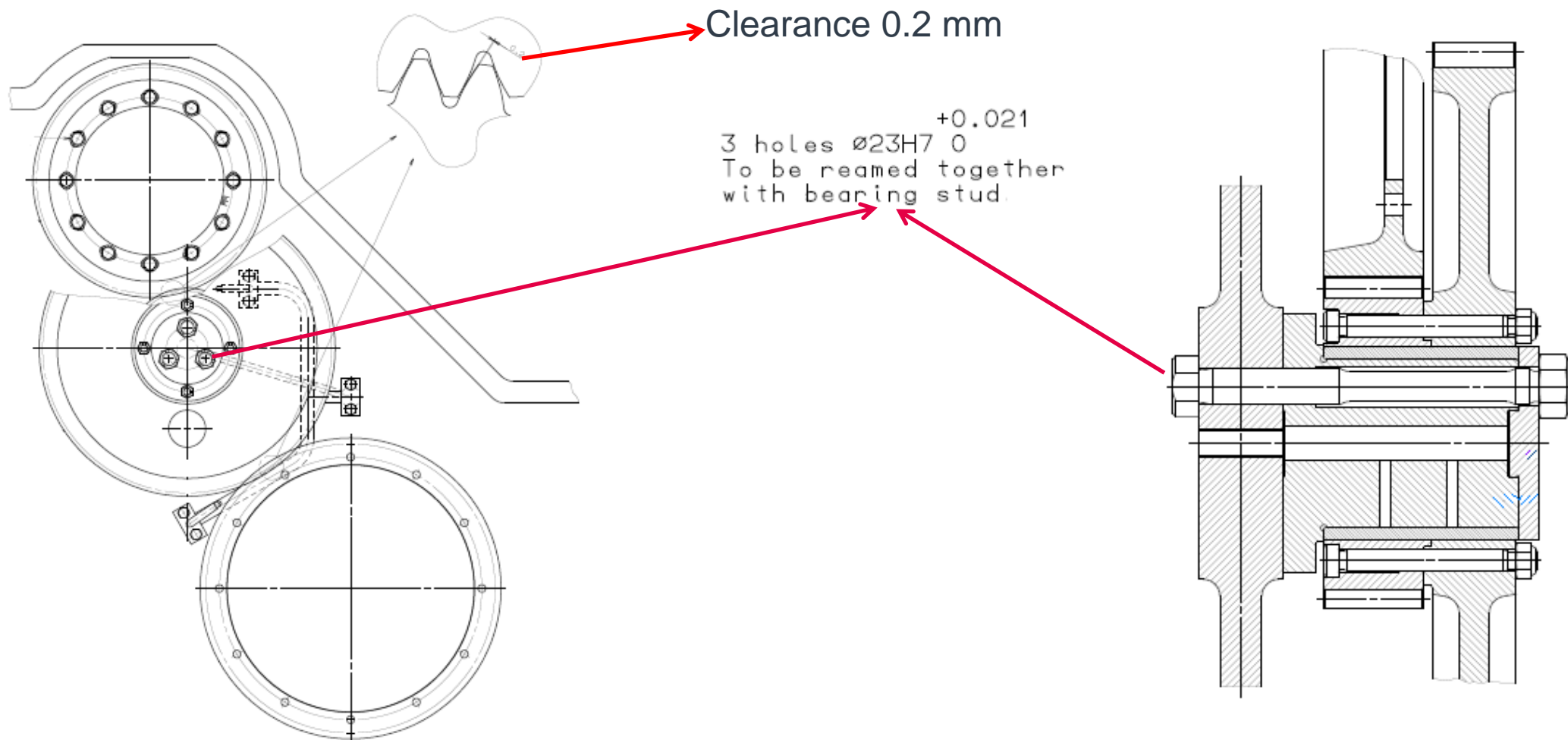


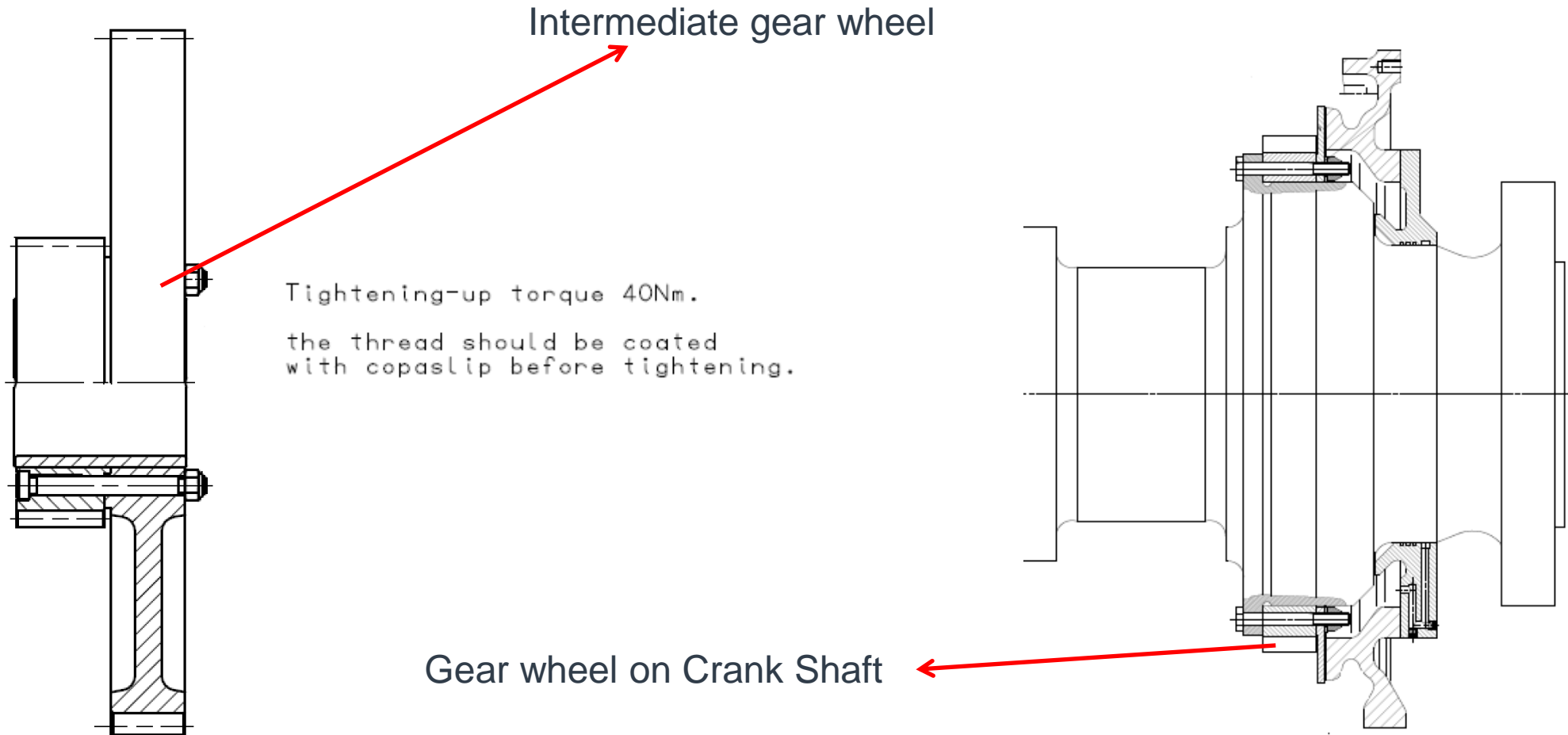
L23/30H-L28/32H Camshaft



L23/30H-L28/32H Camshaft



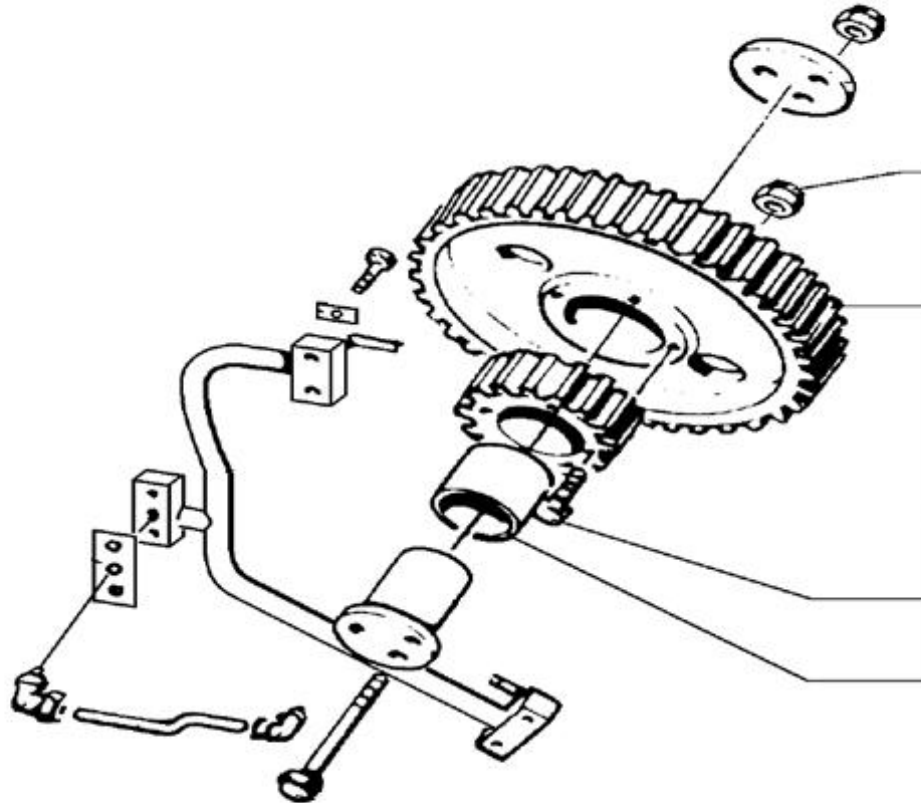
L23/30H-L28/32H Camshaft and intermediate wheel



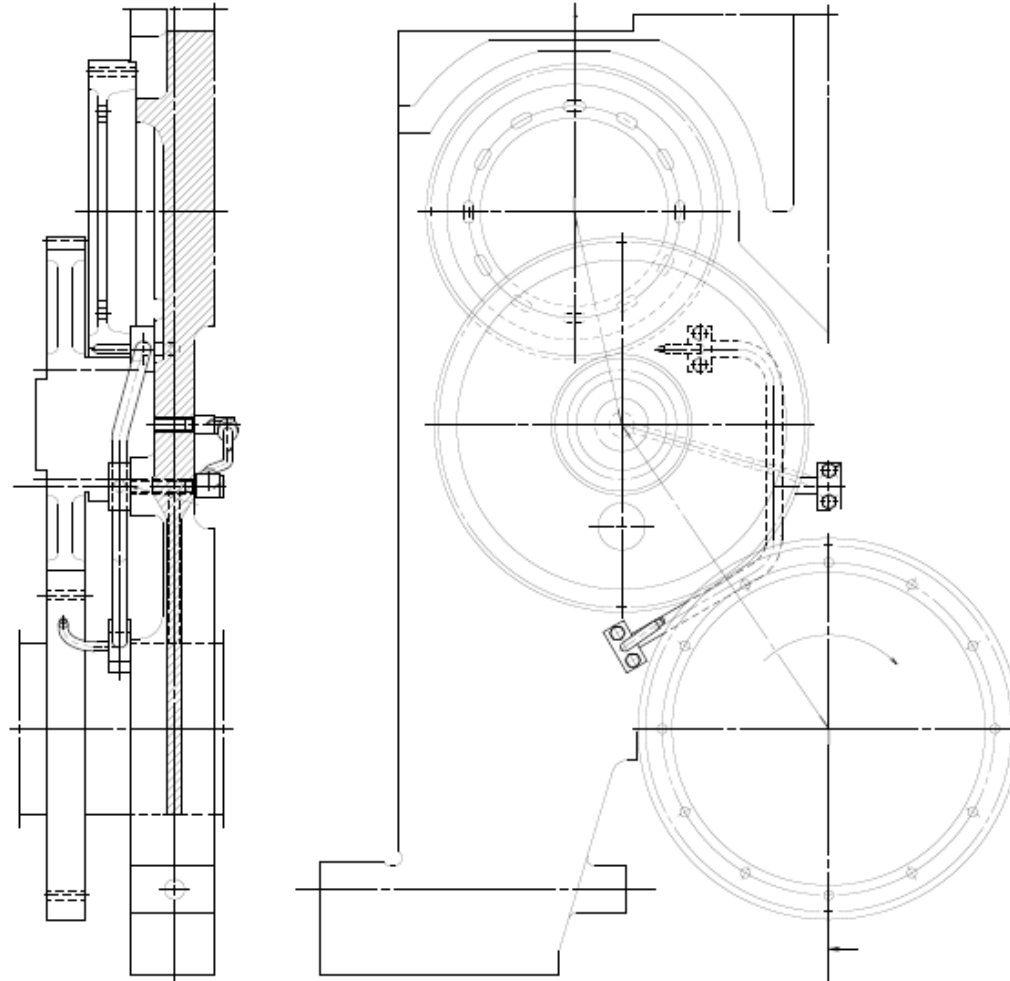
L23/30H-L28/32H Lubricating of gear wheel



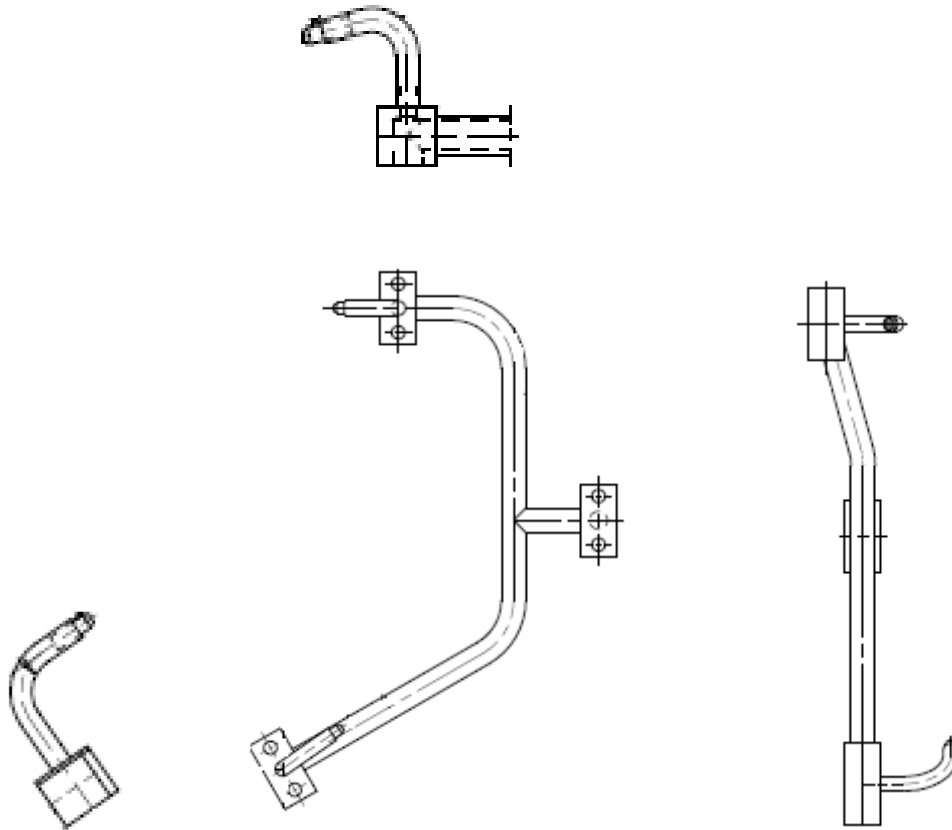
Gear wheels are lubricated by the system oil



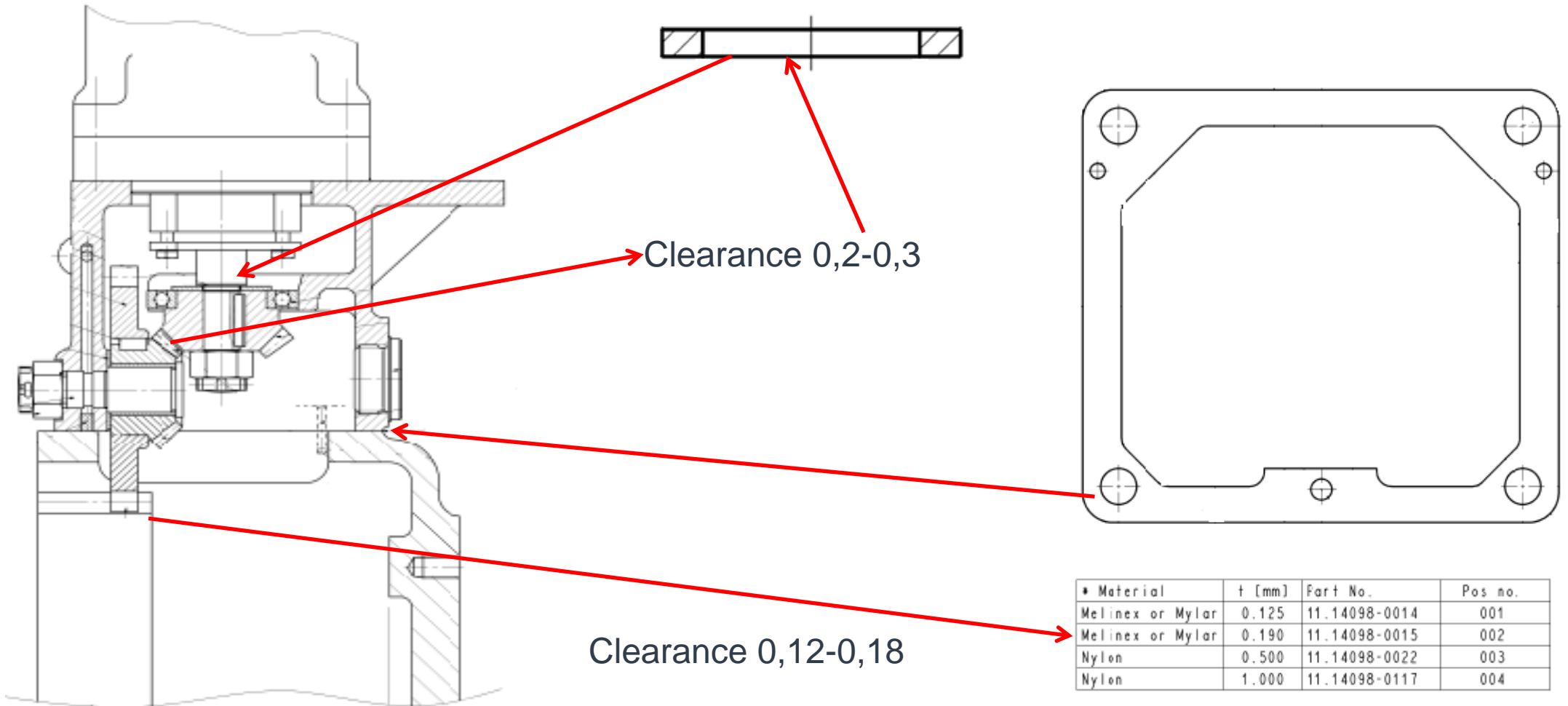
L23/30H-L28/32H Lubricating of gear wheel



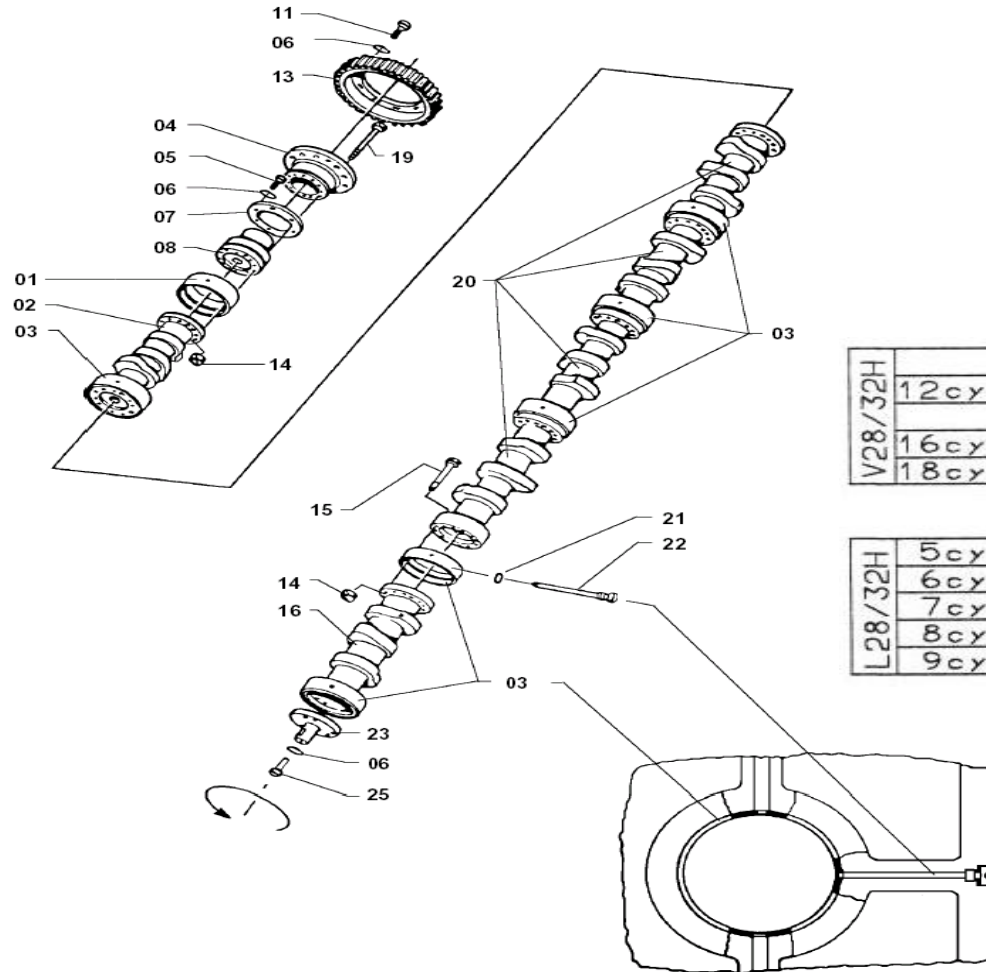
L23/30H-L28/32H Lubricating of gear wheel



L23/30H-L28/32H Camshaft



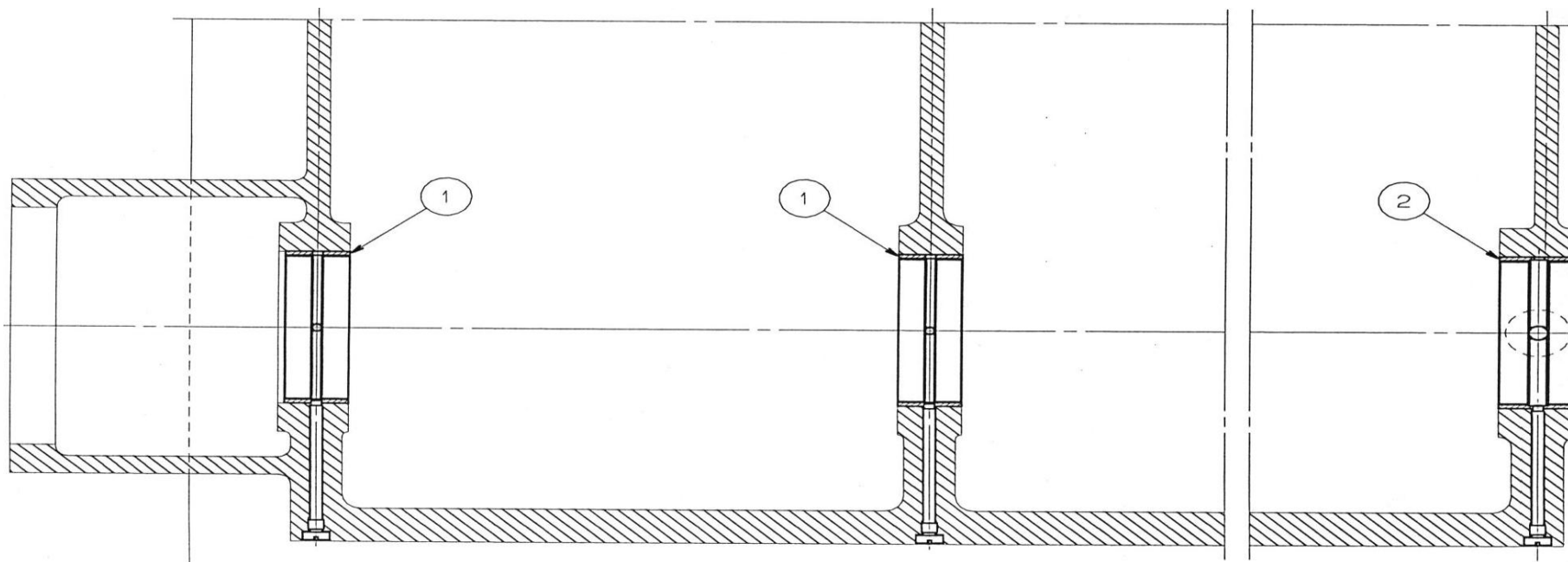
L23/30H-L28/32H Cam shaft and firing order



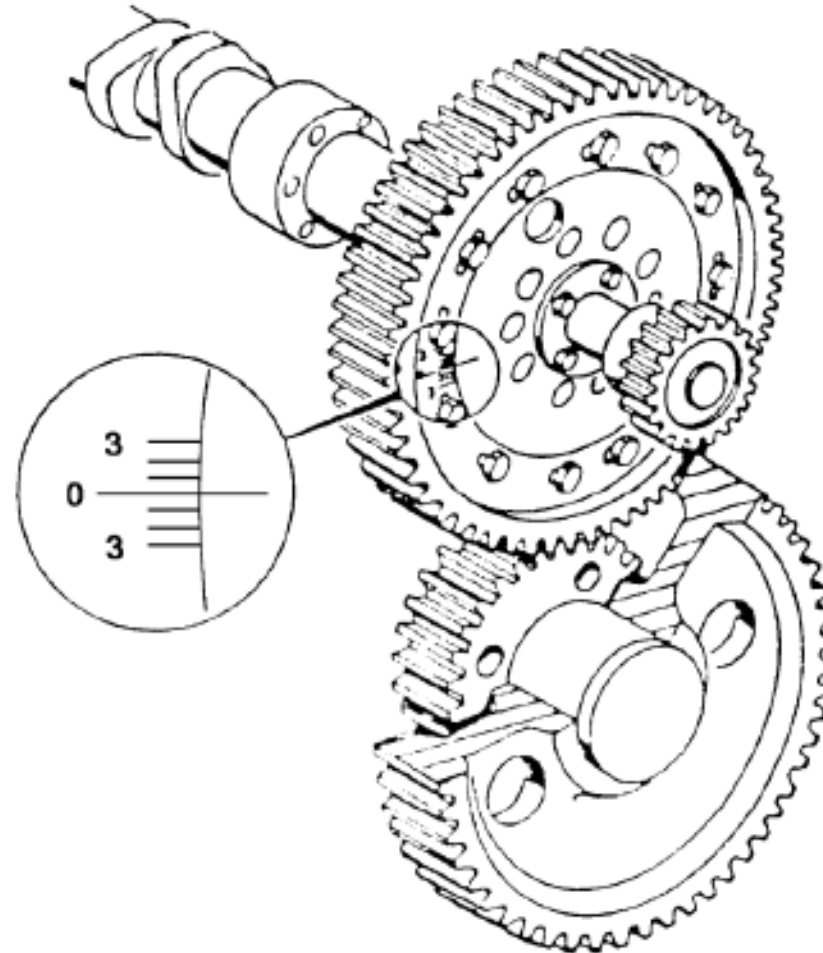
V28/32H	12 cyl	1B	1A	4B	4A	2B	2A	6B	6A	3B	3A	5B	5A						
V28/32H	16 cyl	1B	1A	6B	6A	2B	2A	5B	5A	8B	8A	3B	3A	7B	7A	4B	4A		
V28/32H	18 cyl	1B	1A	5B	5A	9B	9A	4B	4A	7B	7A	8B	8A	2B	2A	3B	3A	6B	6A

L28/32H	5 cyl	1	2	4	5	3													
L28/32H	6 cyl	1	4	2	6	3	5												
L28/32H	7 cyl	1	2	4	6	7	5	3											
L28/32H	8 cyl	1	2	4	6	8	7	5	3										
L28/32H	9 cyl	1	5	9	3	6	8	2	4	7									

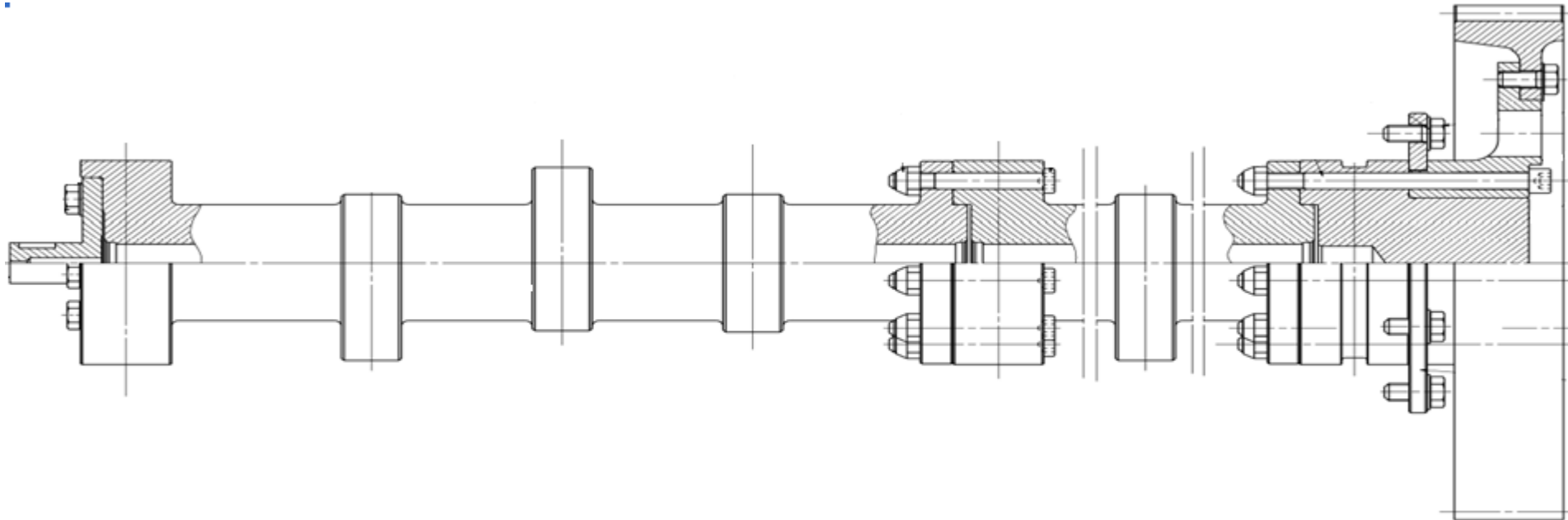
L23/30H-L28/32H Cam shaft



L23/30H-L28/32H Cam shaft



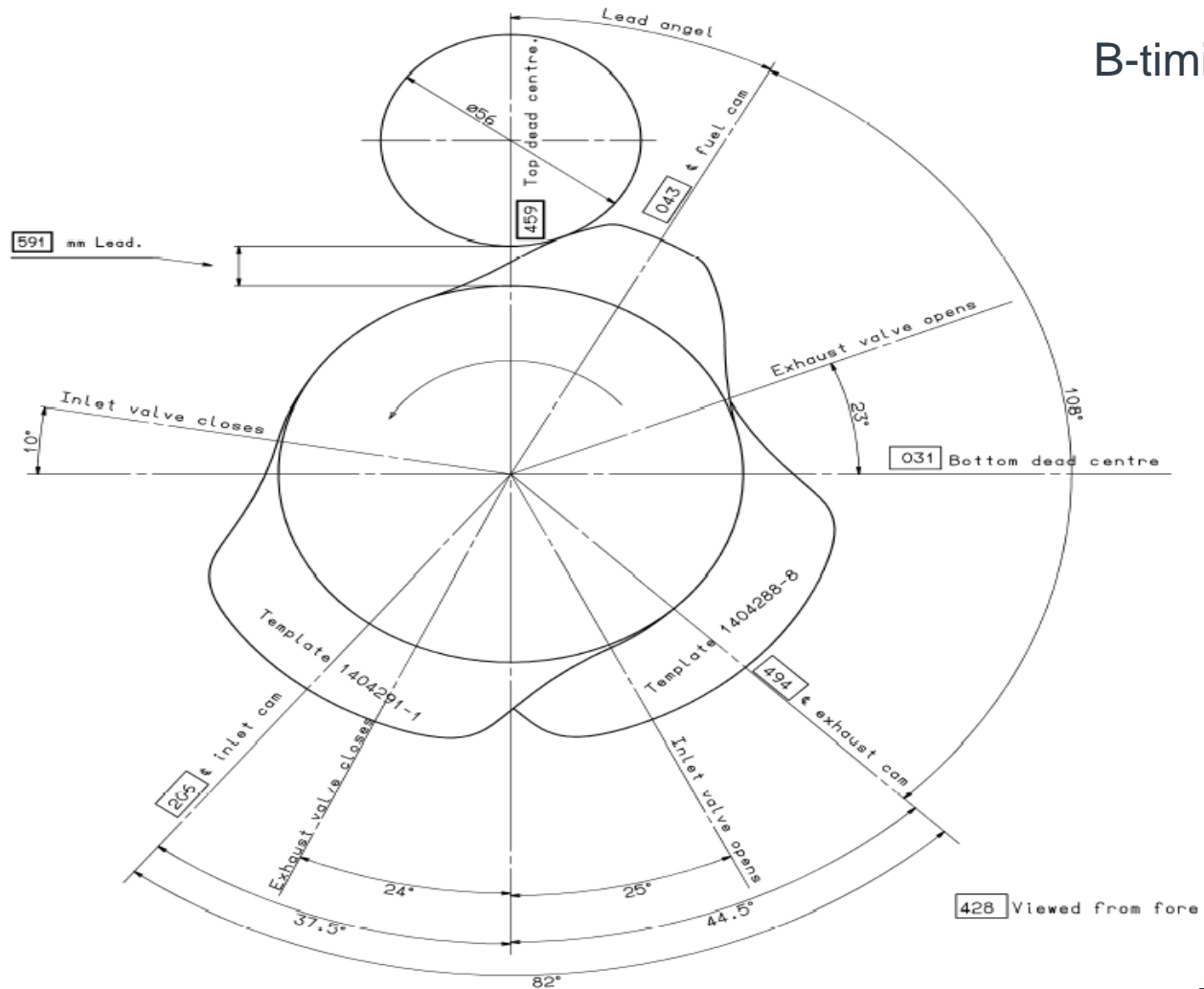
L23/30H-L28/32H Cam shaft



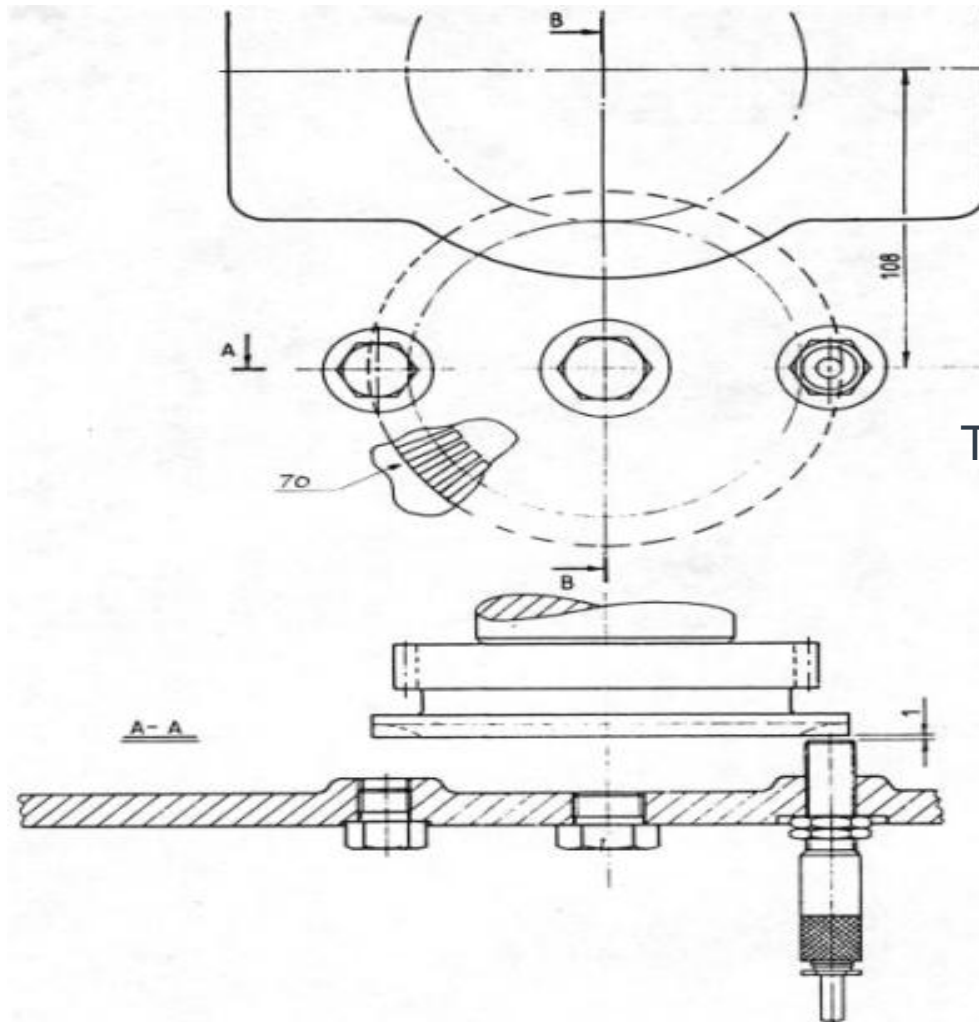
L23/30H-L28/32H Cam shaft



B-timing



L23/30H-L28/32H Cam shaft



Tacho wheel

Disclaimer



All data provided in this document is non-binding.

This data serves informational purposes only and is especially not guaranteed in any way. Depending on the subsequent specific individual projects, the relevant data may be subject to changes and will be assessed and determined individually for each project. This will depend on the particular characteristics of each individual project, especially specific site and operational conditions.

Any questions are welcome?

