

ΕΞΕΤΑΣΤΙΚΗ ΠΕΡΙΟΔΟΣ ΙΟΥΝΙΟΥ 2019,
ΜΑΘΗΜΑ ΝΑΥΤΙΚΑ ΑΓΓΛΙΚΑ Α ΕΞΑΜΗΝΟΥ

ΘΕΜΑΤΑ

EXERCISE A: WRITE THE IMO SMCP TERM: [10]

1. Vessel restricted in its ability to manoeuvre by the depth in water at which it floats
2. Vessel turned over
3. Vessel secured by ropes or made fast to the shore or anchors
4. Vessel restricted in its ability to manoeuvre by the nature of its work
5. Vessel still afloat, abandoned at sea
6. Vessel not at anchor, or made fast to the shore or aground
7. Vessel damaged in such a manner as to be incapable of proceeding
8. Vessel unable to manoeuvre as required by the COLREGs
9. Vessel moving uncontrollably by current, tide or wind
10. Vessel destroyed, sunk or abandoned at sea

EXERCISE B: WRITE THE APPROPRIATE MEMBER OF THE CREW [10]

- 1- A rating belonging to the engine department; does welding and pipe installation
- 2- A rating belonging to the deck department; works on deck, also keeps a lookout, acts as helmsman on bridge
- 3- A rating belonging to the catering department; cleans accommodation spaces
- 4- The officer responsible for navigation (voyage planning, chart correction, bridge electronics, etc.)
- 5- The officer responsible for loading and discharging the vessel, head of the deck department

EXERCISE C: EXPLAIN THE FOLLOWING IMO SMCP TERMS (in English). [6]

1. Escape route
2. Flooding
3. To inert

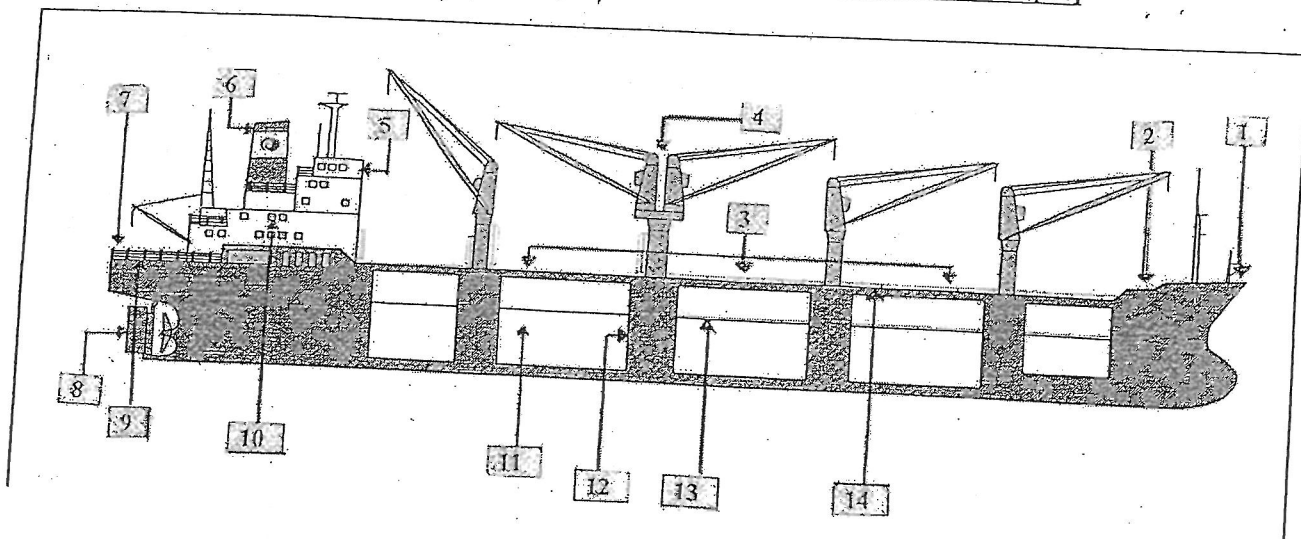
EXERCISE D: WRITE THE TERMS FOR THE FOLLOWING IMO SMCP DEFINITIONS. THE FIRST LETTER IS GIVEN. [10]

1. L..... G.....	To set free or cast off lines, anchors, etc.
2. O.....	Ready for immediate use
3. S.....	The accidental escape of oil into the sea
4. B..... A.....	All gear necessary for the safe transfer of the pilot
5. T..... C.....	VTS authorisation for a vessel to proceed under conditions specified
6. W.....	A mark/ position a vessel is required to report at, to establish its position
7. L.....	To lower, e.g. lifeboats, to the water
8. P.....	To continue with the voyage or sail for a certain direction
9. F.....	The anchor has its own cable twisted around it
10. F.....	Navigable part of a waterway

EXERCISE E. FILL IN THE MISSING WORDS. THE FIRST LETTER IS GIVEN. (10)

1. A wind is v..... when it is constantly changing speed and direction.
2. To be on the sheltered side of the ship is called l.....
3. F... of anchor is when the anchor has its own cable twisted around it.
4. The o.... in charge of the engine room is the Chief Engineer.
5. The OS is a r... who is a member of deck department.

EXERCISE F: WRITE THE NAME OF THE PARTS OF THE VESSEL SHOWN BY ARROWS [14]



EXERCISE G: WRITE THE APPROPRIATE SAFETY EQUIPMENT [10]

1. You need it to spray water/powder to a fire
2. You need it to carry injured people to the vessel's hospital
3. You need it to help passengers abandon ship safely and quickly
4. You need it in the cold sea
5. You need it to save the victim in a man overboard incident, you throw it to the person overboard to keep them afloat

EXERCISE H: WRITE THE TYPE OF VESSEL [10]

1. Merchant vessel with a capacity measured in TEUs
2. Tanker which carries crude oil, with a capacity of 200.000-300.000 dwt
3. Single deck vessel with five to nine holds, which carries grain, iron ore, minerals, etc.
4. Special duty vessel which assists big ocean-going vessels to reach their berth with safety
5. Special duty vessel which widens and deepens channels

EXERCISE I: NAME SOME PLACES ON THE SHIP'S ACCOMMODATION: (10 points)

1. All the navigation activities take place there, electronic navigation equipment can be found there :
2. Safety meetings take place there:
3. Meals are served there for the members of the crew:
4. The cook cooks there:
5. On the two sides of the bridge, they offer good visibility aft:

EXERCISE J: WRITE WHAT THE ABBREVIATIONS STAND FOR. [10]

VTS, UTC, GMDSS, EPIRB, TSS

GOOD LUCK!

total: 100 points

Οι Εισηγήτριες:
Μαρία Παναγοπούλου, Παρασκευή Παπαλεωνίδα