

**MERCHANT MARINE ACADEMY OF MACEDONIA
SCHOOL OF ENGINEERS**

STUDENT'S FULL NAME:

STUDENT NUMBER:

Academic year: 2015-2016

Exam period: February

Date: 17/2/2014

Semester: A

Instructor's name: Dr M. Tsompanoglou

FINAL TEST in English

1. Complete the sentences with the correct form of the words in parentheses. (10 points)

..... ropes are used to fasten the ship to the quay. (moor)

In the 4-stroke diesel engine one cycle of of the engine is completed in 4 strokes of the piston. (operate)

The Wartsila-Sulzer RTA96-C is one of the most (power) engines in the world today. Its total engine (weigh) is 2300 tons. Its (high) is 89 feet. Its fuel (consume) is 1,660 gallons of heavy oil per hour.

The (broad) of the vessel is 20 metres and the overall (long) is 200 metres.

Liferafts are (inflate)

To go on board a vessel, you can use the ladder. (embark)

2. Complete the sentences with an appropriate word. (9 points)

On a vessel the place where people eat is called: m.....

On a vessel the place where the cook cooks is called: g.....

The a..... winches are situated on the forecastle.

The Capricorn makes a speed of 14 k..... . Her grain c..... is 328500 cubic feet.

The bulkhead near the bow of a ship is called c..... bulkhead.

When you are facing the bow, you have the s..... side on your right, and the p..... side on your left. The right side of the stern is called starboard q..... .

3. Write the names of the vessels that do the following: (10 points)

It carries liquefied petroleum gas: _____

It transfers the pilot to the ship: _____

Serves as a beacon for navigation: _____

It carries any type of cargo in "boxes": _____

It carries dry loose cargo such as grain, iron, ore etc.: _____

It carries liquid loose cargo such as crude oil, diesel oil, etc.: _____

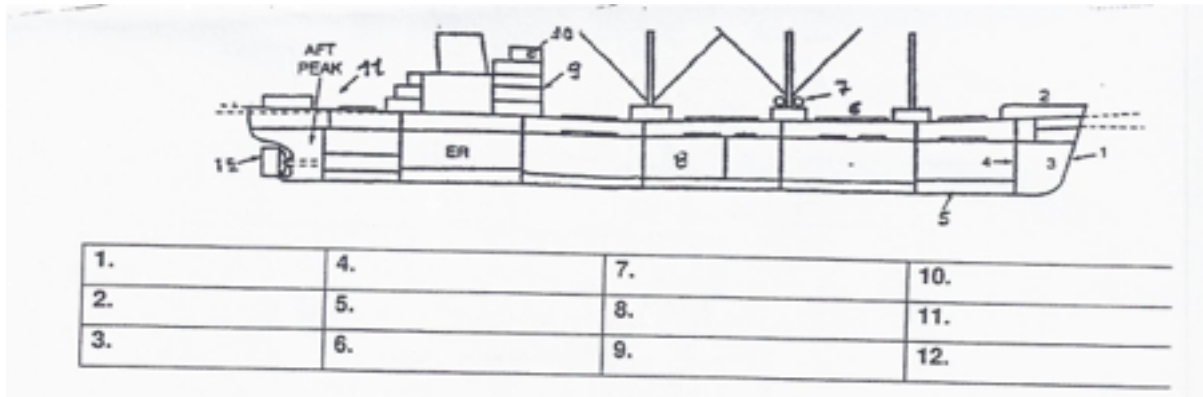
It carries vehicles: _____

It carries refrigerated cargo: _____

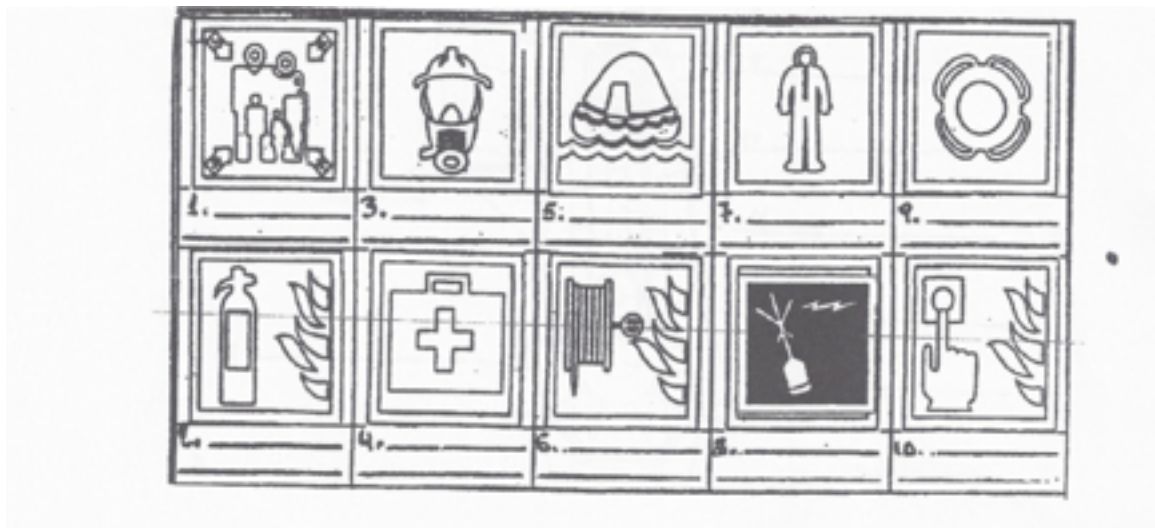
It tows other vessels: _____

It crushes a way through ice: _____

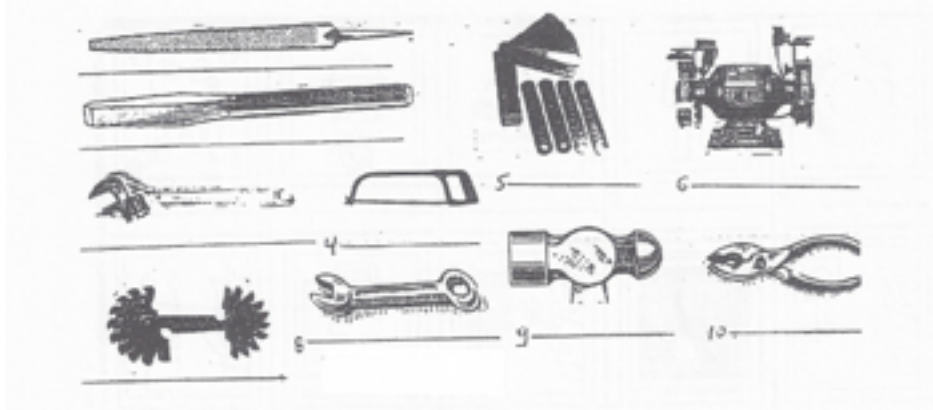
4.Name the following parts of the vessel. (18 points)



5.Name the following life saving equipment. (10 points)



6. Identify the following tools. (15 points)



7. Match the parts of the diesel engine: *water jacket, gudgeon pin, sump tank, exhaust valve, crosshead, camshaft, cylinder liner, crank pin, connecting rod, bedplate, cylinder head* **with their function below. There is one more that won't be needed. (10 points)**

It cools the cylinder externally:

It opens the valves:

It supports the whole engine:

It connects the piston to the connecting rod:

It connects the piston rod to the connecting rod:

It connects the connecting rod to the crankshaft:

It protects the cylinder and reduces friction:

The gases escape through this valve:

The lubricating oil is kept in here:

It houses all the valves:

8. Name the parts in the following diagram of a 4-stroke diesel engine. (18 points)

