

**MERCHANT MARINE ACADEMY OF MACEDONIA
SCHOOL OF ENGINEERS**

STUDENT'S FULL NAME:

STUDENT NUMBER:

Academic year: 2015-2016

Exam period: February

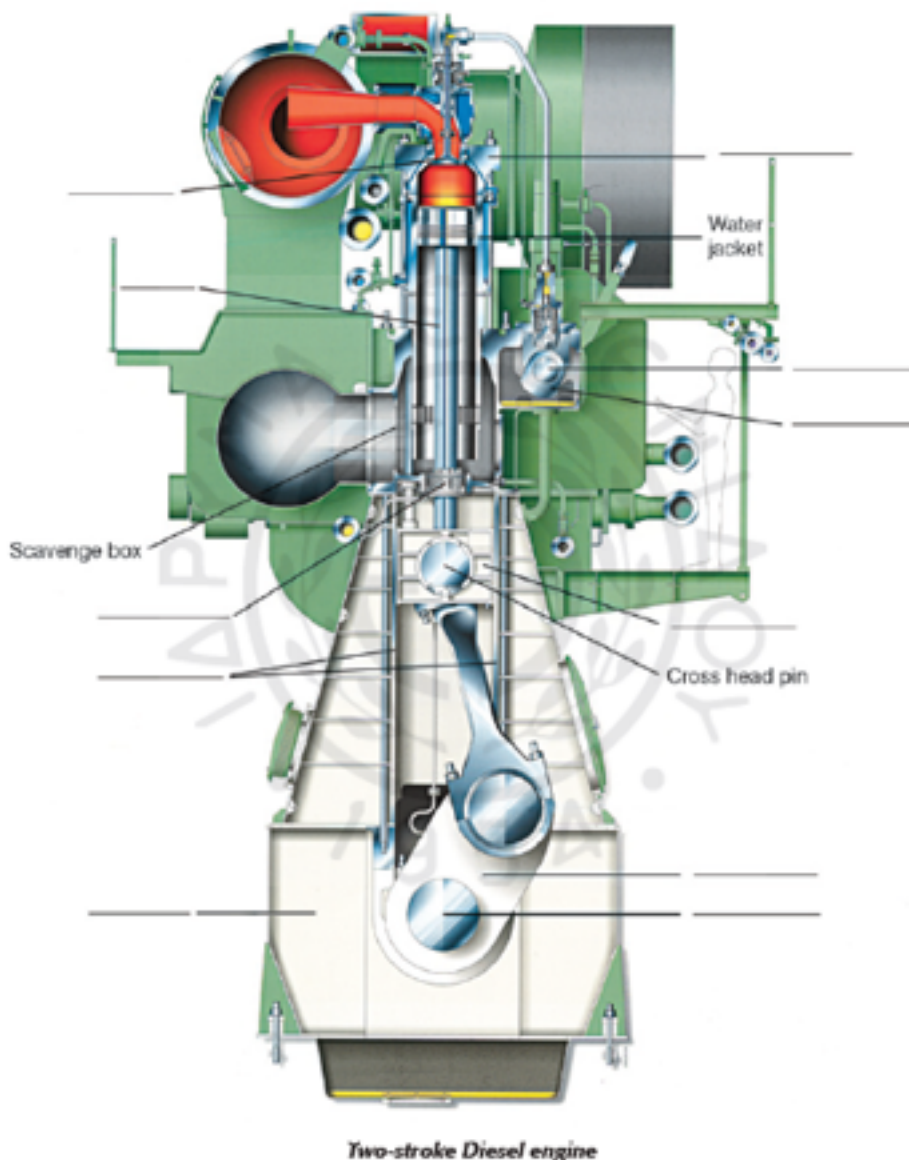
Date: 17/2/2016

Semester: A

Instructor's name: Dr M. Tsompanoglou

FINAL TEST in English

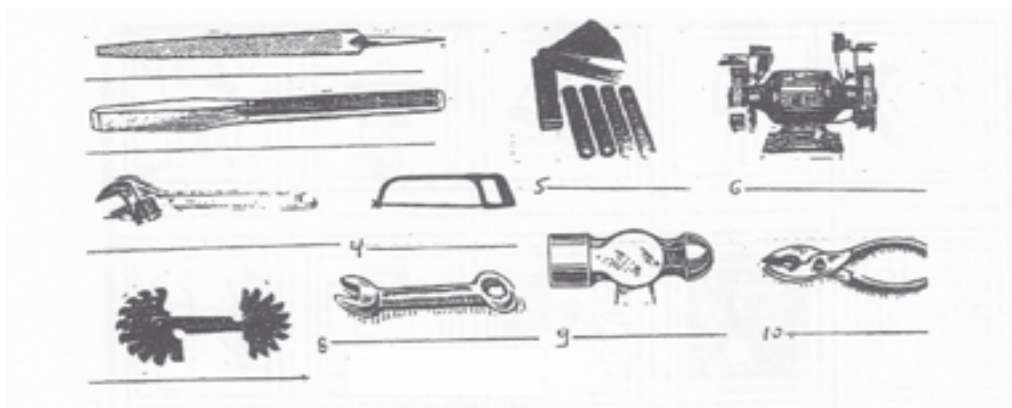
1. Name the parts in the following diagram of a 2-stroke diesel engine. (18 points)



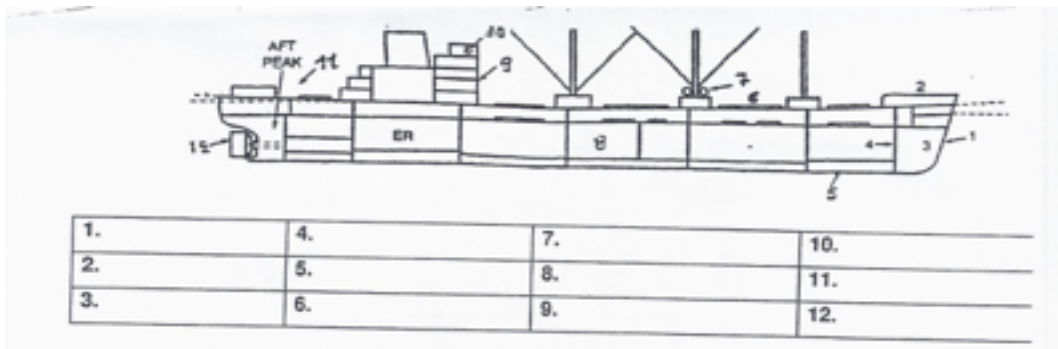
2. Match the parts of the diesel engine to their functions. (10 points)

1. crankshaft	a. opens the valves
2. camshaft	b. reduces friction
3. piston	c. compresses the air
4. cylinder liner	d. supports the whole engine
5. piston rod	e. reciprocates in the stuffing box
6. connecting rod	f. rotates and gives motion to the propeller
7. bedplate	g. gives rotating motion to the crankshaft
8. crosshead	h. connects the piston rod to the connecting rod
9. piston pin	i. connects the piston to the connecting rod
10. crank pin	j. connects the connecting rod to the crankshaft

3. Identify the following tools. (15 points)



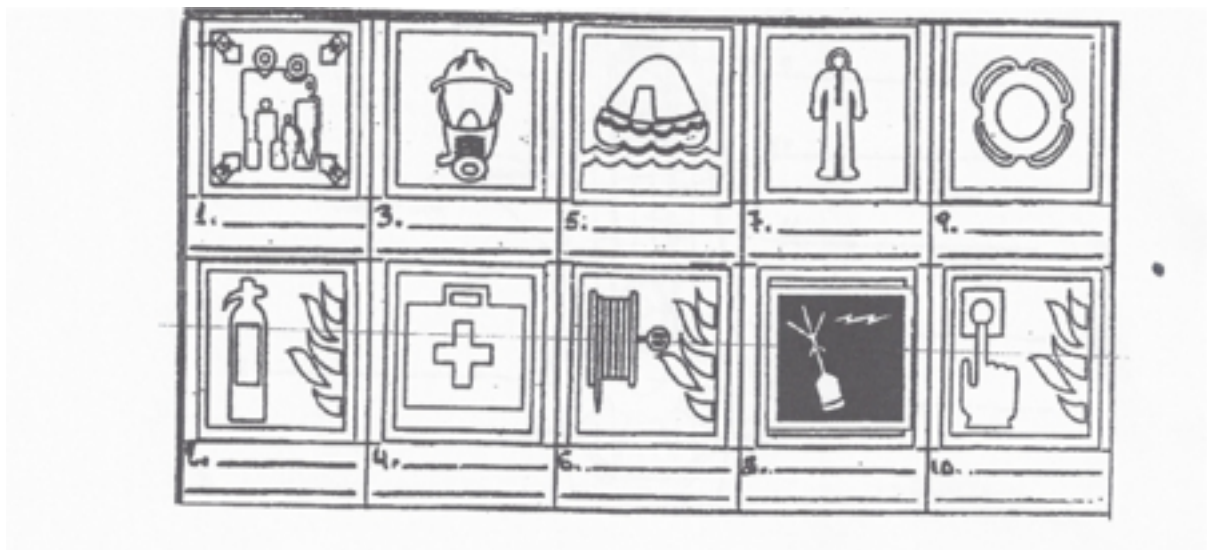
4. Name the following parts of the vessel. (18 points)



5. Write the names of the vessels that do the following: (15 points)

- It carries liquefied natural gas: _____
- It transfers the pilot to the ship: _____
- It carries passengers and cars: _____
- It carries any type of cargo in "boxes": _____
- It carries dry loose cargo such as grain, iron, ore etc.: _____
- It carries liquid loose cargo such as crude oil, diesel oil, etc.: _____
- It carries vehicles: _____
- It carries refrigerated cargo: _____
- It tows other vessels: _____
- It crushes a way through ice: _____

6. Name the following life saving equipment. (15 points)



7. Find the missing words. Choose from the following:

*galley, camshaft, drill, messroom, capacity,
cylinder, containers, knots, routes , personnel (10 points)*

..... ships can make holes on the seafloor.

Ferries operate on short sea

On a vessel the place where people eat is called:

On a vessel the place where the cook cooks is called:

..... carry their cargo in special "boxes".

The Capricorn makes a speed of 14 Her grain is 328500 cubic feet.

The Chief Engineer is responsible for the E/R

The liner protects the cylinder by reducing friction.

The carries the cams which operate the fuel pumps and exhaust valves.