

**MERCHANT MARINE ACADEMY OF MACEDONIA  
SCHOOL OF ENGINEERS**

**STUDENT'S FULL NAME:**

**STUDENT NUMBER:**

**Academic year: 2014-2015**

**Exam period: September**

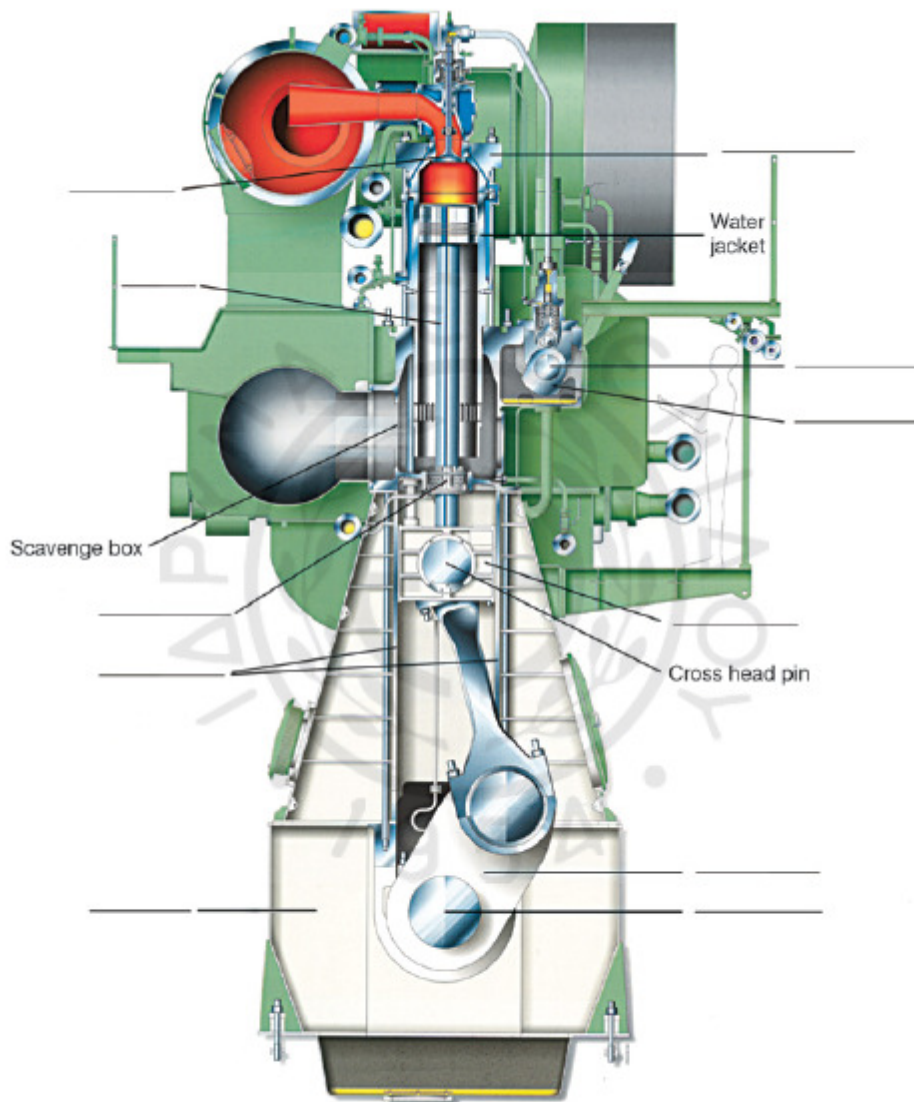
**Date: 23/9/2015**

**Semester: A**

**Instructor's name: Dr M. Tsompanoglou**

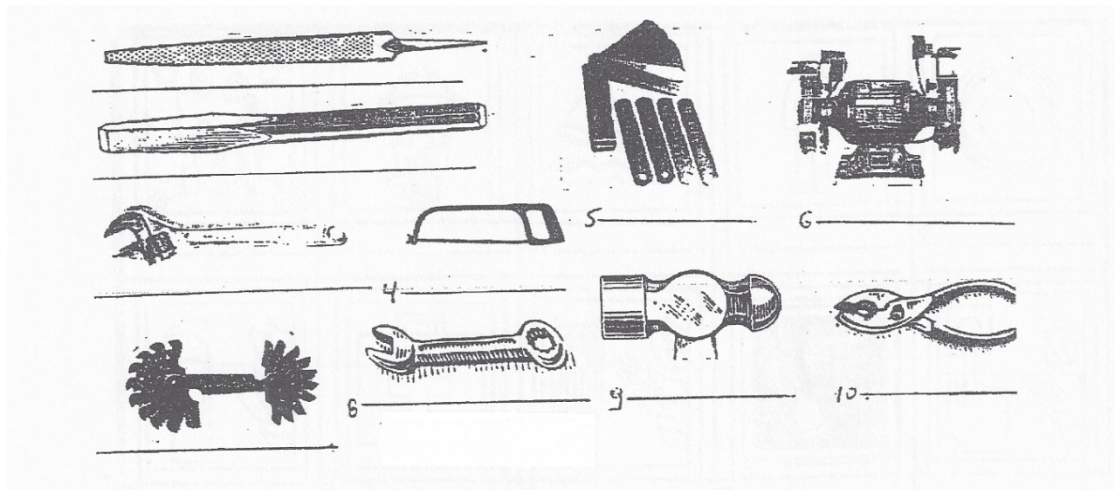
**FINAL TEST in English**

- 1. Name the parts in the following diagram of a 2-stroke diesel engine. (18 points)**

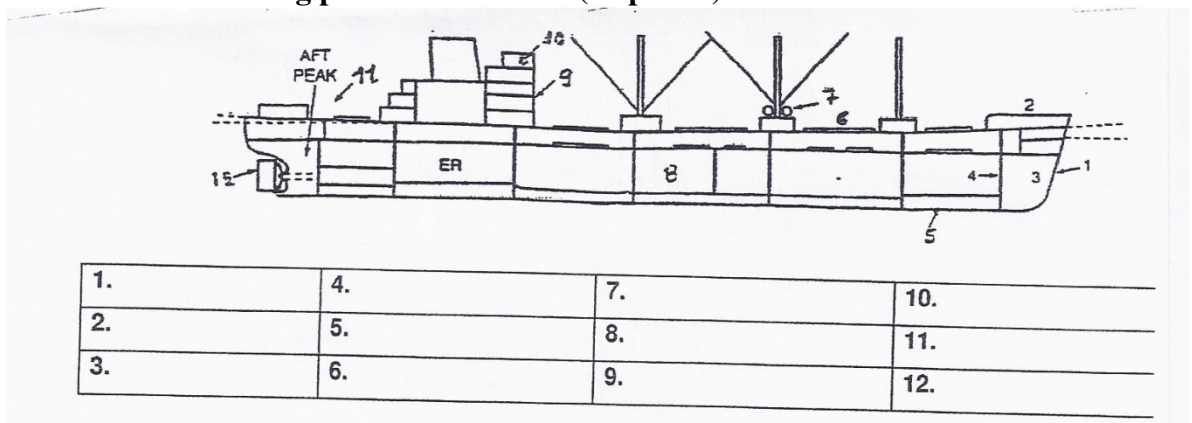


***Two-stroke Diesel engine***

**2. Identify the following tools. (15 points)**



**3. Name the following parts of the vessel. (18 points)**



1.	4.	7.	10.
2.	5.	8.	11.
3.	6.	9.	12.

**4. Match the following words. In the 2<sup>nd</sup> column write the correct kind of the vessel from the 1<sup>st</sup> column. (15 points)**

Container	Tows other vessels:
Reefer	Carries liquefied petroleum gas:
LPG	Carries cargo in "boxes":
LASH Vessel	Carries vehicles:
Ice breaker	Carries unpacked cargo:
Tug	Carries refrigerated cargo:
Dry Bulk Carrier	Carries cargo in break-bulk form:
Ro-Ro ship	Carries lighters aboard ship:
General Cargo Ship	Transfers the pilot to the ship:
Pilot boat	Crushes a way through ice:

**5. Complete the sentences with a suitable preposition: *below, of, on, with, for, in.* (10 points)**

..... the forecastle, inside the bulbous bow, there is a forepeak tank.  
 The engine room is ..... the superstructure aft of the ship.  
 Feeler gauges consist ..... a number of thin blades.  
 Are you familiar ..... the LSA?  
 When you enter the lifeboat, you must be equipped ..... your lifejacket.  
 The bosun is responsible ..... the deck ratings.  
 The superstructure is ..... the main deck of a vessel.  
 The chief engineer's office is ..... the port side ..... the ship.  
 Bulk carriers transport their cargo ..... bulk.

**6. Match the following words. (15 points)**

1. Crank	a.Cover
2.Cylinder	b.Rod
3.Exhaust	c.Web
4.Crank	d.Box
5.Hatch	e.Pin
6.Main	f.Valve
7.Poop	g.Liner
8.Inlet	h.Valve
9.Stuffing	i. Deck
10. Connecting	j.Deck

**7. Complete the following sentences using the words given: (10 points)**

*cylinder, container, knots, routes, personnel  
 galley, camshaft, drill, messroom, capacity,*

On a vessel the place where the cook cooks is called: .....  
 ..... ships carry their cargo in special "boxes".  
 The ..... liner protects the cylinder by reducing friction.  
 The ..... carries the cams which operate the fuel pumps and exhaust valves.  
 ..... ships can make holes on the seafloor.  
 Ferries operate on short sea .....  
 On a vessel the place where people eat is called: .....  
 The Capricorn makes a speed of 14 ..... Her grain ..... is 328500 cubic feet.  
 The Chief Engineer is responsible for the E/R .....