

**MERCHANT MARINE ACADEMY OF MACEDONIA
SCHOOL OF ENGINEERS**

STUDENT'S FULL NAME:

STUDENT NUMBER:

Academic year: 2017-2018

Exam period: February

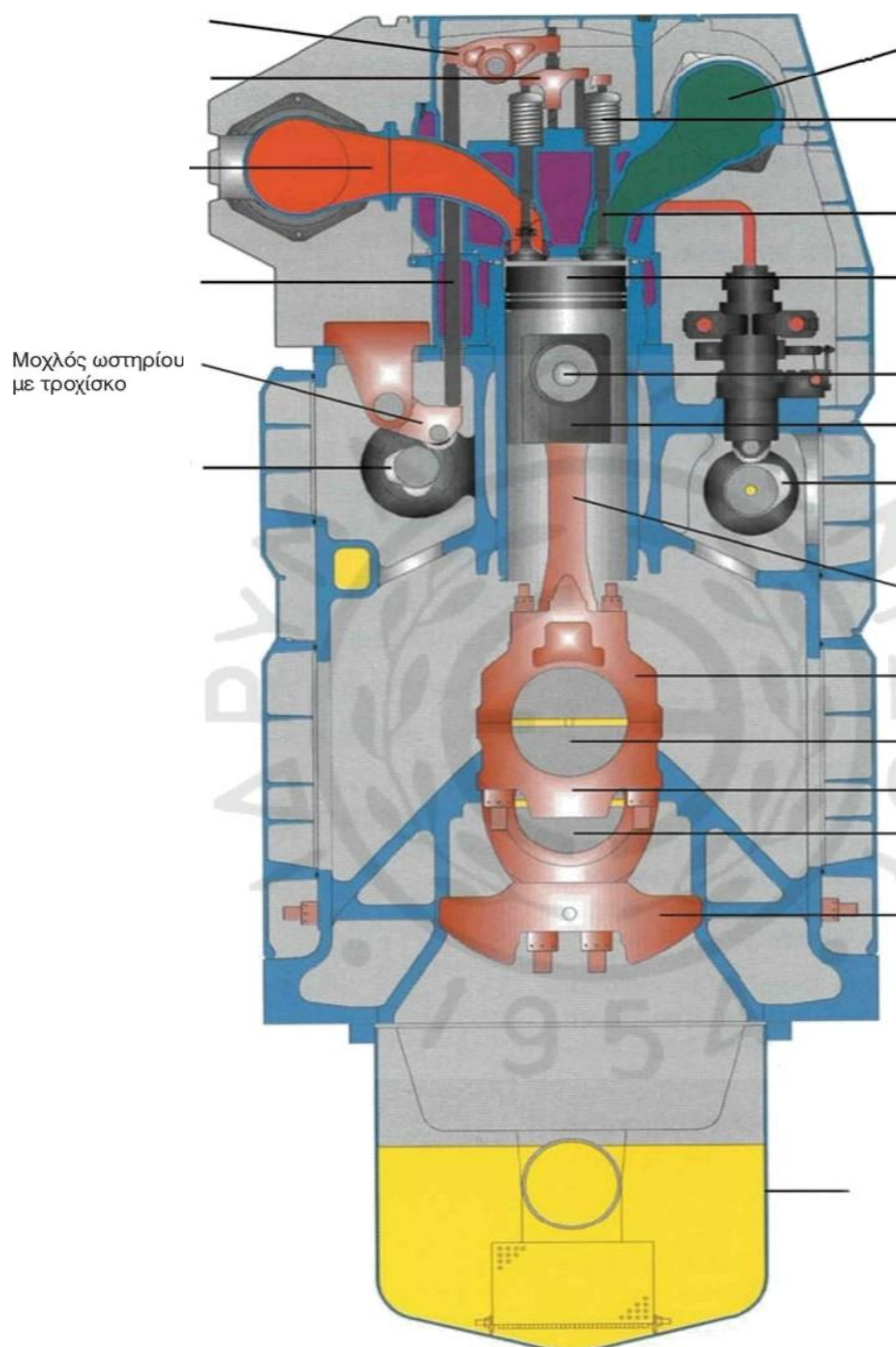
Date: 15/2/2018

Semester: A

Instructor's name: M. Tsompanoglou

FINAL TEST (Retakes)

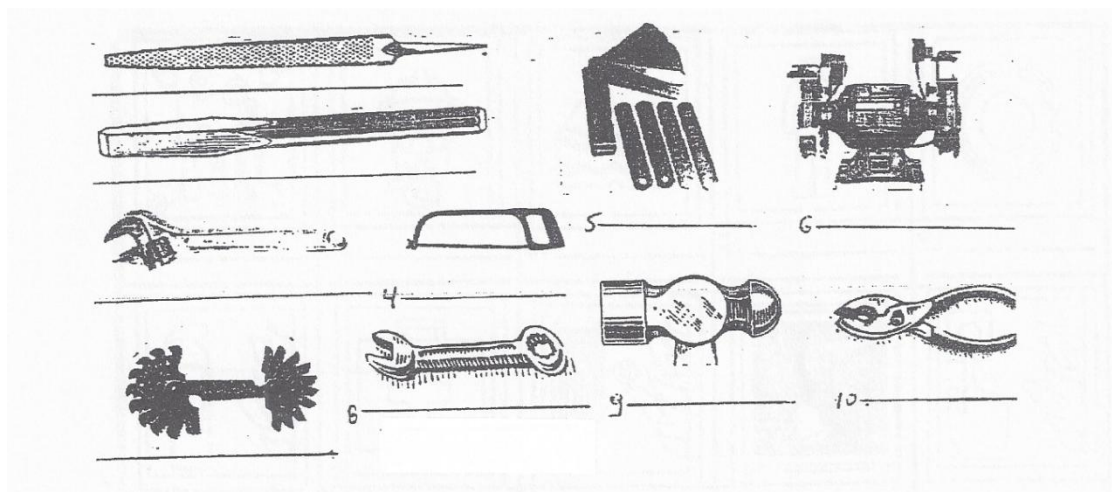
- 1. Name the parts in the following diagram of a 4-stroke diesel engine. (18 points)**



2. Match the following parts of a diesel engine with their functions. (10 p.)
 (Μεταφέρετε τις λέξεις από την πρώτη στήλη στην δεύτερη)

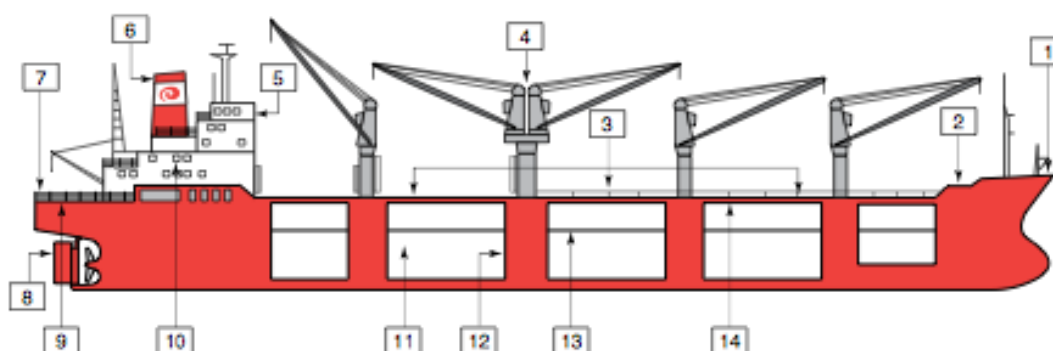
crankshaft	opens the valves:
camshaft	reduces friction:
piston	compresses the air:
cylinder liner	supports the whole engine:
piston rod	reciprocates in the stuffing box:
connecting rod	rotates and gives motion to the propeller:
bedplate	gives rotating motion to the crankshaft:
crosshead	connects the piston rod to the connecting rod:
piston pin	connects the piston to the connecting rod:
crank pin	connects the connecting rod to the crankshaft:

3. Identify the following tools. (15 points)



4. Name the following parts of the vessel: (14 points)

- | | |
|-----|------|
| 1.: | 8.: |
| 2.: | 9.: |
| 3.: | 10.: |
| 4.: | 11.: |
| 5.: | 12.: |
| 6.: | 13.: |
| 7.: | 14.: |

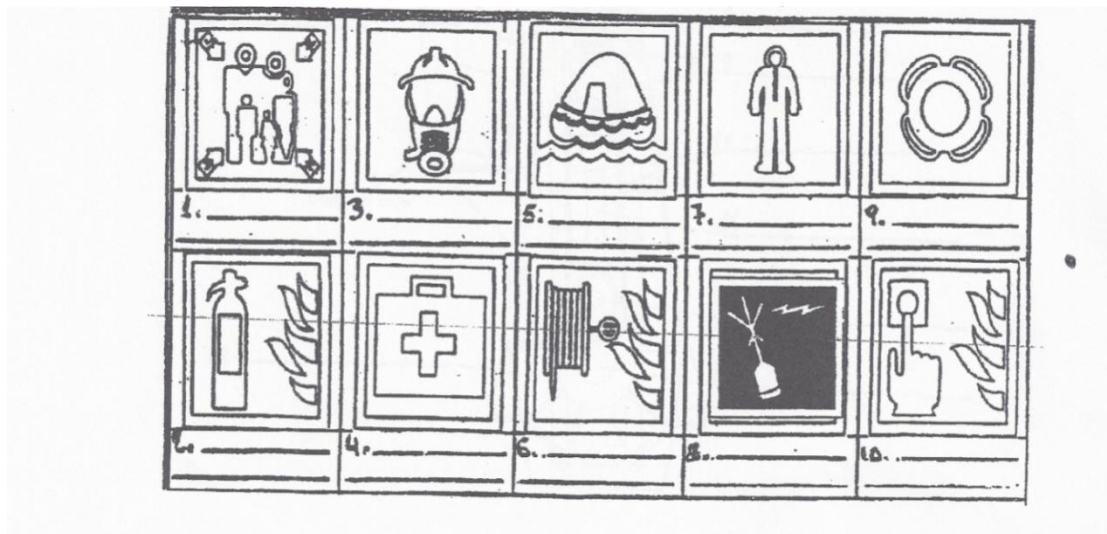


5. Find the kinds of vessels that do the following. (14 p.)

Tug, General cargo ship, Bulk carrier, Cable layer, Pilot boat, LPG, Reefer, Container, Ro-Ro, SAR vessel, Clean-product tanker, Crude carrier, Icebreaker, Paxcar ferry

- Carries refrigerated cargo:
- Carries liquified petroleum gas:
- Assists with the pilotage of another vessel:
- Carries loose cargo such as grain, iron, ore etc.:
- Carries vehicles:
- Tows other vessels:
- Any type of packaged cargo or pieces of machinery:
- Carries crude oil:
- Carries refined petroleum products:
- Lays cables on the bottom of the sea:
- Crushes a way through ice:
- Searches and rescues ships in distress:
- It carries passengers and cars:
- Carries any type of cargo in "boxes":

6. Name the following life saving equipment. (10 points)



7. Find which of the following crew members are responsible for the following duties: (9 points)

*Master, fitter, oiler, chief engineer, chief officer,
wiper, bosun, 2nd engineer*

--Representative of the company and responsible for the safety of the crew and the ship:

--Head of the deck department:

--Head of the engine department:

--Decides which engine repairs need to be done:

--Keeps engine room crew overtime:

--Supervises the O/S and the A/B:

--Lubricates and greases parts of the machinery:

--Cuts and welds pipes:

--Cleans the engine room:

8. Match the following words to their explanation (10 p.)

Μεταφέρετε τις λέξεις από την 1η στήλη στην 2^η!

galley

combustion

bunkering

maintenance

messroom

apparatus

TEU

collision

to discharge

to embark

a. dining room

b. device

c. burning

d. crash

e. kitchen

f. supplying with fuel

g. to get onboard

h. to unload

i. keeping up in good condition

j. twenty feet equivalent unit