

**MERCHANT MARINE ACADEMY OF MACEDONIA
SCHOOL OF ENGINEERS**

STUDENT'S FULL NAME:

STUDENT NUMBER:

Academic year: 2017-2018

Exam period: February

Date: 14/2/2018

Semester: A

Instructor's name: Dr M. Tsompanoglou

FINAL TEST

1. Match the following words to their explanation (12 p.)

Μεταφέρετε τις λέξεις από την πρώτη στήλη στη δεύτερη!

galley	a. dining room:
combustion	b. device:
bunkering	c. burning:
maintenance	d. crash:
messroom	e. kitchen:
apparatus	f. supplying with fuel:
TEU	g. get onboard:
collision	h. unload:
discharge	i. keeping up in good condition:
embark	j. twenty feet equivalent unit:
fleet	k. dismantling, checking and repairing engine parts:
overhauling	l. a group of vessels:

2. Find which of these engine parts do the following: (10 points)

crank pin, exhaust valve, piston, bedplate, crosshead, piston pin, cylinder head, piston rod, push rod, cylinder liner

It reciprocates in the cylinder:

It reciprocates in the stuffing box:

All the valves are fitted in it:

It supports the whole engine:

It connects the piston rod to the connecting rod:

It connects the crankshaft to the connecting rod:

It protects the cylinder reducing friction:

It connects the piston to the connecting rod:

The gases go out through this valve:

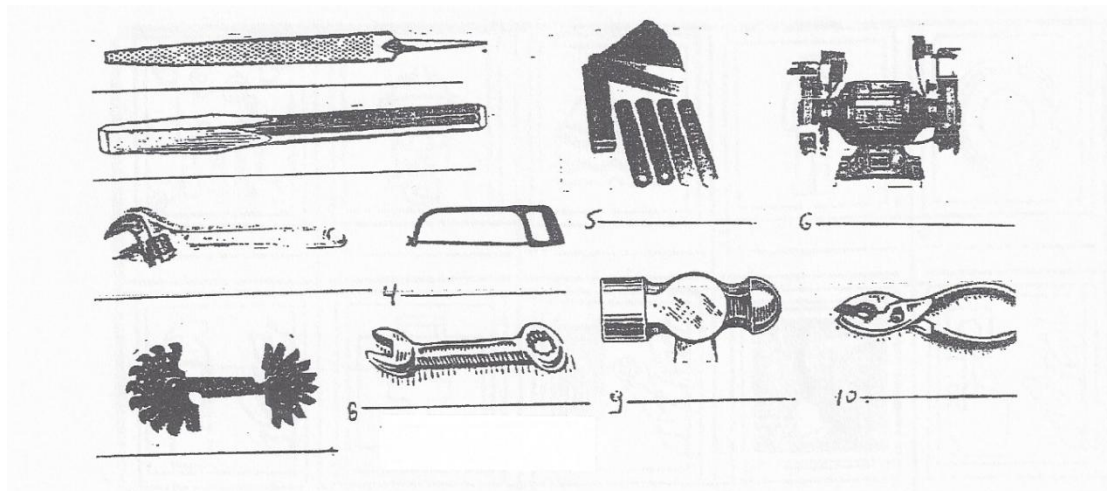
The camshaft opens the valves with the help of this rod:

3. Find the kinds of vessels that do the following: (7 points)

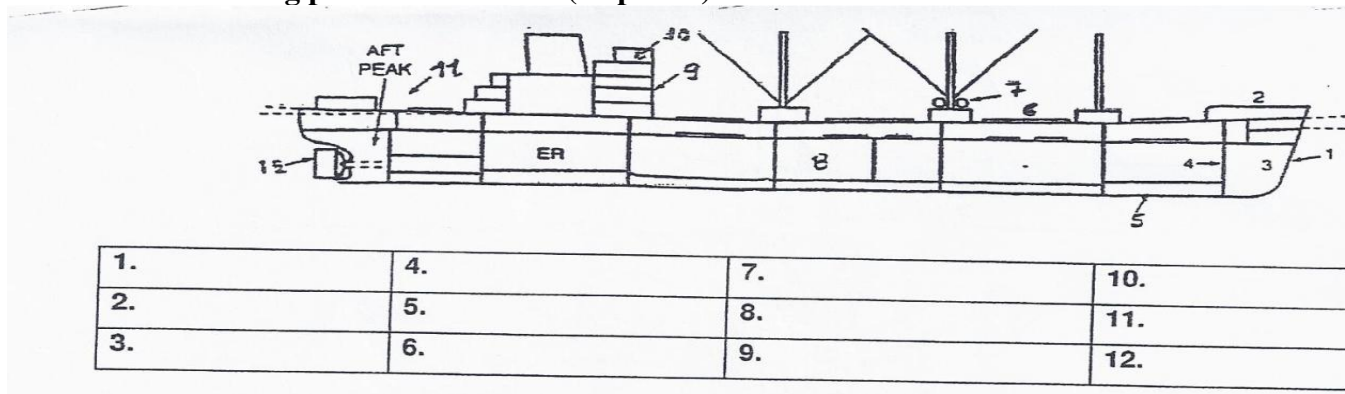
Cable layer, Pilot tender, LPG, Reefer, Container, Clean-product tanker, Crude carrier, Icebreaker, General cargo ship, Ro-Ro, Lightship, Tug, Bulk carrier, Paxcar ferry

- Carries liquified petroleum gas:
- Assists with the pilotage of another vessel:
- Carries loose cargo such as grain, iron, ore etc.:
- Carries vehicles:
- Any type of packaged cargo or pieces of machinery:
- Carries crude oil:
- Carries refined petroleum products:
- Lays cables on the bottom of the sea:
- Crushes a way through ice:
- It carries passengers and cars:
- Serves as a beacon for navigation:
- Carries any type of cargo in "boxes":
- Carries refrigerated cargo:
- Tows other vessels:

4. Identify the following tools. (15 points)



5. Name the following parts of the vessel. (18 points)



6. Find the crew member who is responsible for the following duties: (10 points)

You can choose from the following suggestions:

Master, fitter, oiler, chief engineer, chief mate, 2nd mate, wiper, bosun, 2nd engineer, 3rd engineer, A/B, O/S

Decides which engine repairs need to be done:

Keeps engine room crew overtime:

Is the representative of the company and responsible for the safety of the crew and the ship:

Is responsible for all machinery on board:

Is traditionally the ship's navigational officer:

Is in charge of the deck department:

Lubricates and greases parts of the machinery:

Cuts and welds pipes:

Cleans the engine room:

Supervises the O/S and the A/B:

7. Name the following life saving equipment. (10 points)

You need against asphyxia in case of fire: **b**_____ **apparatus**.

You need in the cold sea: **i**_____ **suit**.

Life ring. It supports a person in the water: **l**_____.

Small inflatable boat that is used to abandon ship: **l**_____.

It is used to extinguish the fire: fire **e**_____.

The first thing you learn as a cadet is where your **m**_____ **station** is.

Small transmitter that automatically sends a distress message via satellites:

E_____

8. Name the parts in the following diagram of a 4-stroke diesel engine. (18 points)

Ονομάστε μόνο τα μέρη της μηχανής που αντιστοιγούν στις μεγαλύτερες γραμμές!

