

**MERCHANT MARINE ACADEMY OF MACEDONIA  
SCHOOL OF ENGINEERS**

**Course: Maritime English**

**Academic year: 2018 – 2019**

**Semester: A**

**Name:**

**Student number:**

**Instructors: M. Tsompanoglou**

**Exam period: June 2019**

**Date: 19/6/19**

**Exam paper grade:**

**FINAL TEST (Retakes)**

**1. Find the missing words. Choose from the following: (9 p.)**

*valves, seaman, sign, length, knots*

*camshaft, capacity, cylinder, container*

The \_\_\_\_\_ liner protects the cylinder by reducing friction.

The \_\_\_\_\_ carries the cams which operate the fuel pumps and exhaust

\_\_\_\_\_. You can't go on a training trip, unless you have a \_\_\_\_\_'s book.

The vessel's call \_\_\_\_\_ is AEHQ2.

\_\_\_\_\_ ships carry their cargo in special "boxes".

The Capricorn can reach a speed of 14 \_\_\_\_\_. Her grain \_\_\_\_\_ is 328500 cubic feet. Her \_\_\_\_\_ overall is 118 metres.

**2. Match the following words. (10 p.)**

|            |       |
|------------|-------|
| Crank      | Cover |
| Cylinder   | Rod   |
| Exhaust    | Web   |
| Crank      | Box   |
| Hatch      | Pin   |
| Main       | Valve |
| Poop       | Liner |
| Inlet      | Valve |
| Stuffing   | Deck  |
| Connecting | Deck  |

**3. Find which of these engine parts do the following (10 p.)**

*crosshead, crank pin, gudgeon pin, cylinder head,*

*exhaust valve, piston, piston rod, push rod, bedplate, cylinder liner*

The camshaft opens the valves with the help of this rod: \_\_\_\_\_

It connects the piston to the connecting rod: \_\_\_\_\_

All the valves are fitted in it: \_\_\_\_\_

It supports the whole engine: \_\_\_\_\_

It connects the piston rod to the connecting rod: \_\_\_\_\_

It connects the crankshaft to the connecting rod: \_\_\_\_\_

It reciprocates in the cylinder: \_\_\_\_\_

It reciprocates in the stuffing box: \_\_\_\_\_

It protects the cylinder reducing friction: \_\_\_\_\_

The gases go out through this valve: \_\_\_\_\_

#### 4. Underline the correct choice. (10 p.)

In the 2-stroke diesel engine one cycle of operation is completed in **(one, two)** revolutions of the crankshaft.

The camshaft is connected to the rocker arm with the **(push rod, piston rod, connecting rod)**.

We use a **(screwdriver, spanner, hammer)** to tighten or loosen a nut.

A pair of **(pliers, calipers, dividers)** is used to measure thicknesses.

We smoothen and shape a surface with a **(scraper, reamer, file)**.

Diesel engines are **(spark-ignited, compression-ignited)** engines.

For hexagonal screws we use a(n) **(Allen key, open-ended spanner, ratchet wrench)**.

With a **(screw-pitch gauge, feeler, reamer)** we measure very small distances.

In order to hold an object firmly in its place while work is done, we use a **(grinder, fitter's vice, lathe)**.

In order to cut internal threads we use **(cutters, taps, snips)**.

#### 5. Complete the descriptions of the different facilities on board. (9 p.)

*messroom, galley, laundry, lounge, cabins,*

*navigation bridge, hospital, gym, accommodation*

-- In the \_\_\_\_\_, there are the living quarters and recreation rooms for the use of the crew and passengers.

-- The Captain can navigate the vessel in the \_\_\_\_\_.

-- You can watch T.V and relax together in the \_\_\_\_\_.

-- You can get first aids and basic medical treatment in the \_\_\_\_\_.

-- You can have lunch in the \_\_\_\_\_.

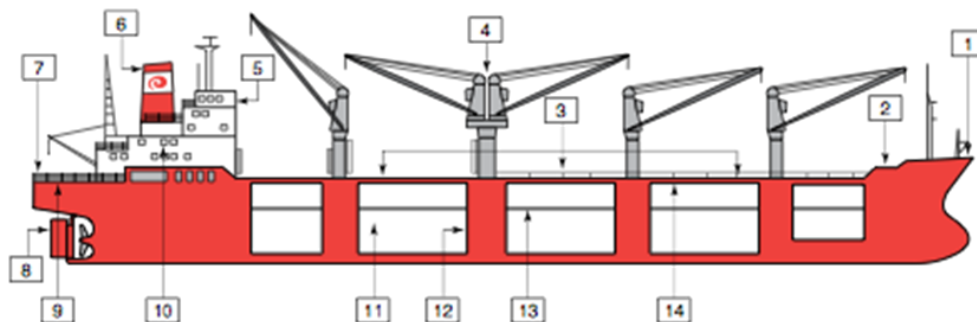
-- You can sleep in your \_\_\_\_\_.

-- The kitchen on a vessel is called the \_\_\_\_\_.

-- You can work out and keep fit in the \_\_\_\_\_.

-- You can wash and dry your clothes in the \_\_\_\_\_.

#### 6. Name the following parts of the vessel: (14 p.)



**7. Find the kinds of vessels that do the following: (15 p.)**

*Bulk carrier, Cable layer, Pilot tender, LPG, Reefer, Container,  
Clean-product tanker, Ro-Ro, SAR vessel, Tug, General cargo ship,  
Lightship, Crude carrier, Icebreaker, Paxcar ferry*

Carries passengers and cars: \_\_\_\_\_  
 Serves as a beacon for navigation: \_\_\_\_\_  
 Carries any type of cargo in "boxes": \_\_\_\_\_  
 Carries refrigerated cargo: \_\_\_\_\_  
 Tows other vessels: \_\_\_\_\_  
 Carries any type of packaged cargo or pieces of machinery: \_\_\_\_\_  
 Carries crude oil: \_\_\_\_\_  
 Carries liquified petroleum gas: \_\_\_\_\_  
 Assists with the pilotage of another vessel: \_\_\_\_\_  
 Carries loose cargo such as grain, iron, ore etc.: \_\_\_\_\_  
 Carries vehicles: \_\_\_\_\_  
 Carries refined petroleum products: \_\_\_\_\_  
 Lays cables on the bottom of the sea: \_\_\_\_\_  
 Crushes a way through ice: \_\_\_\_\_  
 Searches and rescues ships in distress: \_\_\_\_\_

**8. Find which of the following crew members are responsible for the following duties: (8 p.)**

*Master, fitter, oiler, chief engineer, wiper,  
bosun, 2<sup>nd</sup> engineer, apprentice engineer*

Keeps the engine room crew overtime: \_\_\_\_\_  
 Supervises the O/S and the A/B: \_\_\_\_\_  
 Lubricates and greases parts of the machinery: \_\_\_\_\_  
 Cuts and welds pipes: \_\_\_\_\_  
 Cleans the engine room: \_\_\_\_\_  
 Learns about bunkering: \_\_\_\_\_  
 Is the representative of the company and responsible for the safety of the crew and the ship: \_\_\_\_\_  
 Is responsible for all machinery on board: \_\_\_\_\_

9. Name the parts in the following diagram of a 2-stroke diesel engine. (15 points)

