

**MERCHANT MARINE ACADEMY OF MACEDONIA  
SCHOOL OF ENGINEERS**

**Course: Maritime English**

**Academic year: 2021 – 2022**

**Exam period: February 2022**

**Semester: A**

**Date: 7/2/22**

**Name:**

**Student number:**

**Instructors: M. Tsompanoglou, E. Xenitidou, A. Birbili**

**FINAL TEST**

**1. Find which of these engine parts do the following: (10 points)**

*exhaust valve, piston, connecting rod, crankshaft, crankcase  
piston pin, cylinder head, push rod, water jacket, cylinder liner*

- It reciprocates in the cylinder and compresses the air:
- It changes the reciprocating motion of the piston into rotating:
- All the valves are fitted in it:
- It houses and supports the crankshaft:
- It cools the cylinder externally:
- It protects the cylinder reducing friction:
- It connects the piston to the connecting rod:
- It rotates in the crankcase:
- The gases go out through this valve:
- The camshaft opens the valves with the help of this rod:

**2. Circle the correct tool. (10 p.)**

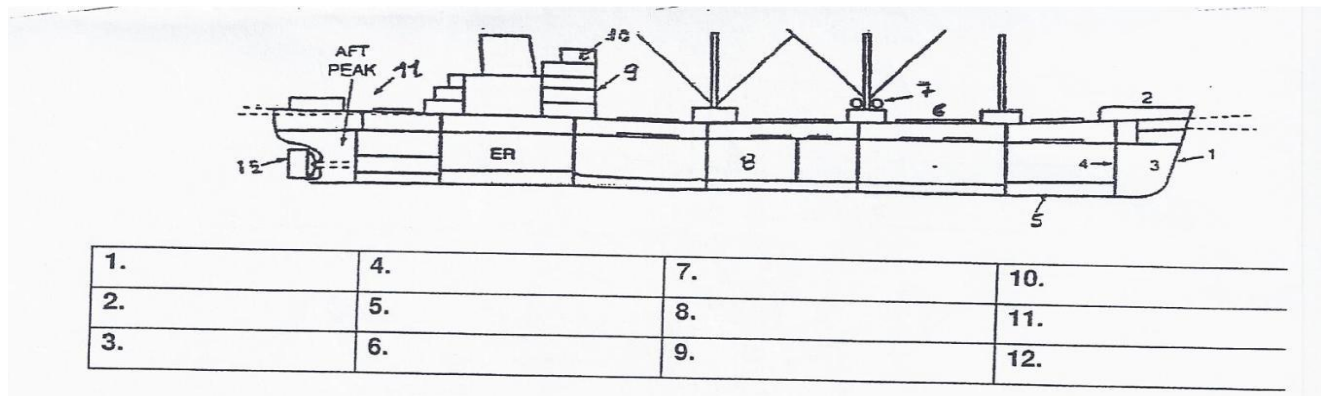
- It cuts or bends wire: (**pliers, file, centre punch**)
- It uses fuel gases and oxygen to cut metal: (**cutter, cutting torch, side cutter**)
- We smoothen and shape a surface with a (**scraper, reamer, file**).
- A hammer with a large plastic or wooden head: (**ball-peen hammer, mallet, straight-peen hammer**)
- In order to hold an object firmly in its place while work is done, we use a (**grinder, fitter's vice, lathe**).
- In order to cut internal threads, we use (**cutters, taps, snips**).
- We use a (**screwdriver, spanner, hammer**) to tighten or loosen a nut.
- A pair of (**pliers, calipers, dividers**) is used to measure thicknesses.
- For hexagonal screws we use a(n) (**Allen key, open-ended spanner, ratchet wrench**).
- With a (**screw-pitch gauge, feeler, reamer**) we measure very small distances.

**3. Complete the following descriptions. The 1<sup>st</sup> letter is given (10 p.)**

- You can wash and dry your clothes in the **l**\_\_\_\_\_y.
- The Captain can navigate the vessel in the **b**\_\_\_\_\_e.
- You can watch T.V and relax together in the **l**\_\_\_\_\_e.
- You can get first aids and basic medical treatment in the **h**\_\_\_\_\_l.

- The right part of the ship is the **s\_\_\_\_\_d** side.
- You can have lunch in the **m\_\_\_\_\_m**.
- You can sleep in your **c\_\_\_\_n**.
- The left part of the ship is the **p\_\_\_\_t** side.
- The kitchen on a vessel is called the **g\_\_\_\_\_y**.
- You can work out and keep fit in the **g\_\_**.

**4. Name the following parts of the vessel: (18 points)**



**5. Match the different types of vessels with their definitions (15 points)**

*Reefers, Ro-Ro, Lightships, Tugs, Pilot tenders, Paxcar ferries, LPG, Bulk carriers, Containers, Crude carriers, Icebreakers, Cable layers, LNG, Drill ships, Cruise ships*

- They help other ships enter a port safely:
- They crush a way through ice:
- They carry passengers and cars:
- They carry loose cargo such as grain, iron, ore etc.:
- They are vessels with huge stern doors, mainly for vehicles and trucks:
- They carry crude oil:
- They dig the bottom of the sea:
- They offer luxury and comfort to holiday makers:
- They carry liquified petroleum gas:
- They lay cables on the bottom of the sea:
- They serve as a beacon for navigation:
- They carry any type of cargo in "boxes":
- They carry refrigerated cargo:
- They tow other vessels:
- They carry extremely dangerous cargo, explosive gas at freezing temperatures:

## 6. Circle the correct answer (12 points)

-- A \_\_\_ is launched instantly, directly by the ship. It is stored in a slipway and drops into the water for a quick getaway in case of an emergency.

- a) **lifeboat**                                      b) **life raft**                                      c) **free fall lifeboat**

-- A \_\_\_ is a rescue boat we use when there is a man overboard.

- a) **MOB lifeboat**                                      b) **lifeboat**                                      c) **lifebuoy**

-- You need the \_\_\_ apparatus against asphyxia when there is too much smoke in the air.

- a) **oxygen**    b) **air**    c) **breathing**

-- You need to wear a(n) \_\_\_ suit in the cold sea.

- a) **life**    b) **immersion**                                      c) **warm**

-- You must throw a \_\_\_ after a person overboard.

- a) **lifebuoy**    b) **lifejacket**                                      c) **life raft**

-- A \_\_\_ is usually inflatable, it is stored in a container aboard a ship, and you need it to save lives in case the ship has to be abandoned in an emergency at sea.

- a) **lifeboat**    b) **life raft**    c) **ship-launched lifeboat**

-- A \_\_\_ is unsinkable and is constructed to withstand heavy, rough seas. It is designed to save people who must abandon ship in an emergency situation.

- a) **lifeboat**    b) **MOB lifeboat**                                      c) **free fall lifeboat**

-- You need a \_\_\_ kit to take care of a wound when you are injured.

- a) **medical**    b) **first aid**    c) **doctor's**

-- A fire \_\_\_ is used to put out a fire by spraying foam, dry powder or water.

- a) **extinguisher**                                      b) **hose**    c) **bottle**

--The first thing you learn as a cadet is where your \_\_\_ station is.

- a) **muster**    b) **master**    c) **fire**

-- Ropes and paint are stored in the \_\_\_.

- a) **bosun's store**                                      b) **accommodation**                                      c) **laundry**

-- A \_\_\_ vessel is equipped with its own cranes for loading and discharging cargo.

- a) **gearless**    b) **geared**    c) **bulker**

## 7. Find which of the following crew members are responsible for the following duties: (10 points)

*chief engineer, Captain, fitter, oiler, chief mate, wiper, bosun, 2nd mate,*

*apprentice engineer, 2<sup>nd</sup> engineer*

-- Is in charge of the ship's cargo:

-- Responsible for aspects of navigation:

-- Head of the engine department:

-- Keeps engine room crew overtime:

-- Follows commands of the officers in the E/R:

-- Supervises the O/S and the A/B:

-- Lubricates and greases parts of the machinery:

-- Cuts and welds pipes:

-- Keeps machinery and engine spaces clean:

-- Pays the crew:

## 8. Name the parts in the following diagram of a 2-stroke diesel engine. (15 p.)

