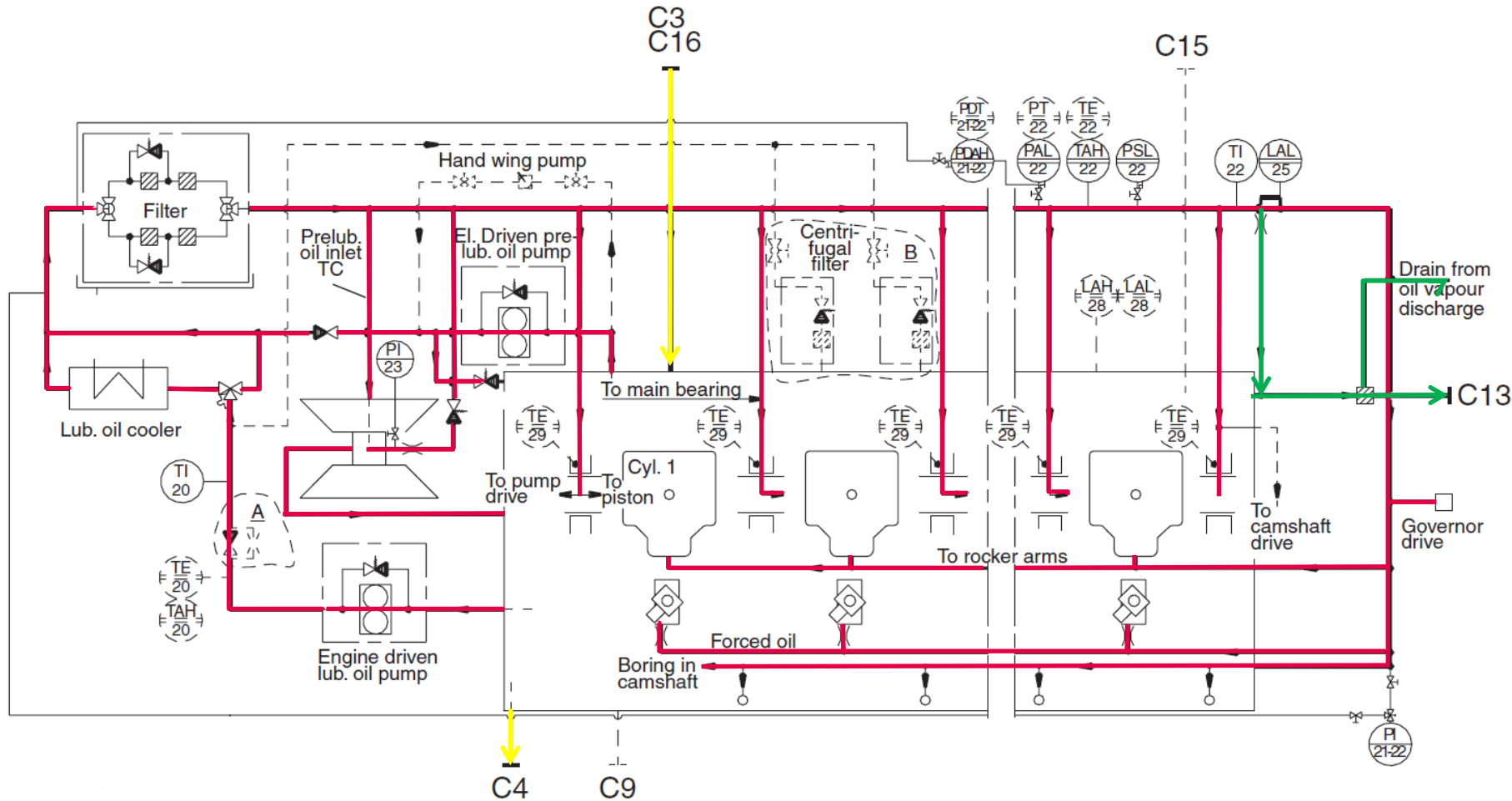


L23/30H-L28/32H Lubrication Oil System

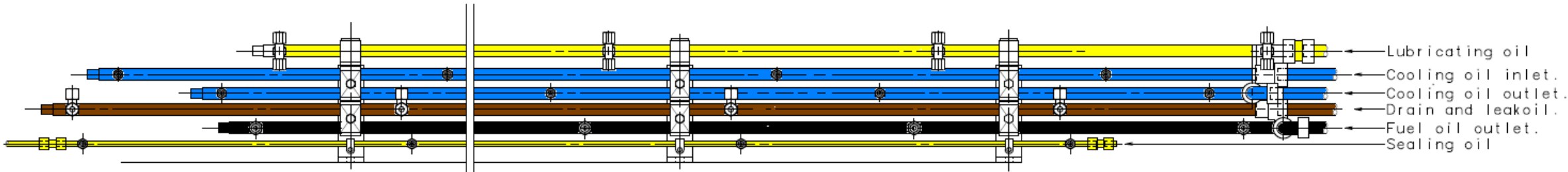


L23/30H-L28/32H Internal Lubricating Oil System

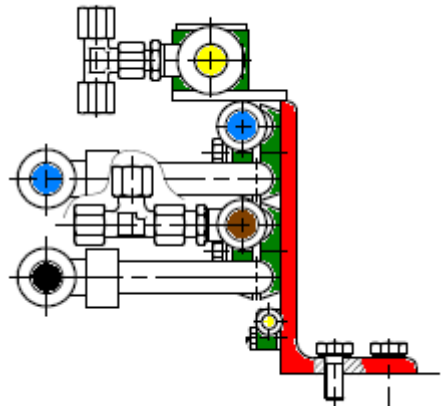


Pipe description for connection at the engine		
C3	Lubricating oil from separator	DN 25
C4	Lubricating oil to separator	DN 25
C7	Lubricating oil from separate filter	DN 80
C8	Lubricating oil to separate filter	DN 80
C9	Back-flush from full-flow filter	DN 20
C13	Oil vapour discharge*	DN 50
C15	Lubricating oil overflow	DN 50
C16	Lubricating oil supply	DN 25

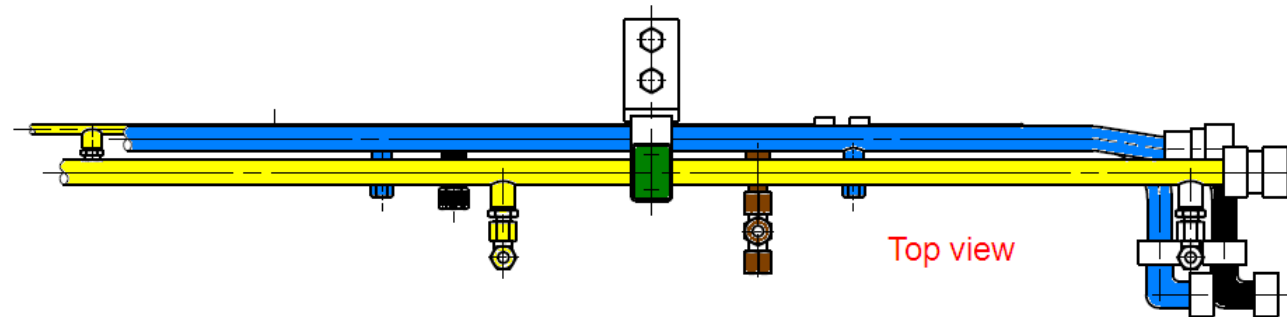
V28/32S Lubrication Oil System – pipes on cylinder



Side view

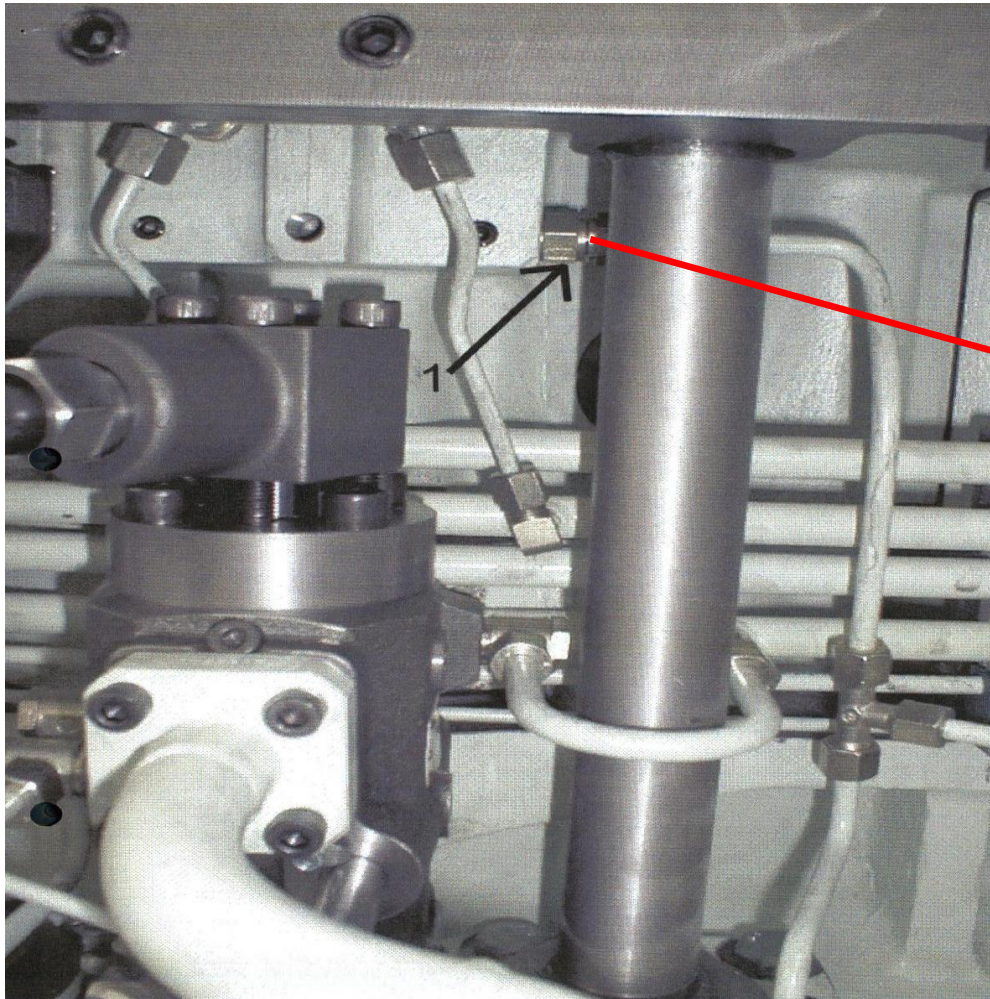


End view



Top view

L28/32H Lubrication Oil System



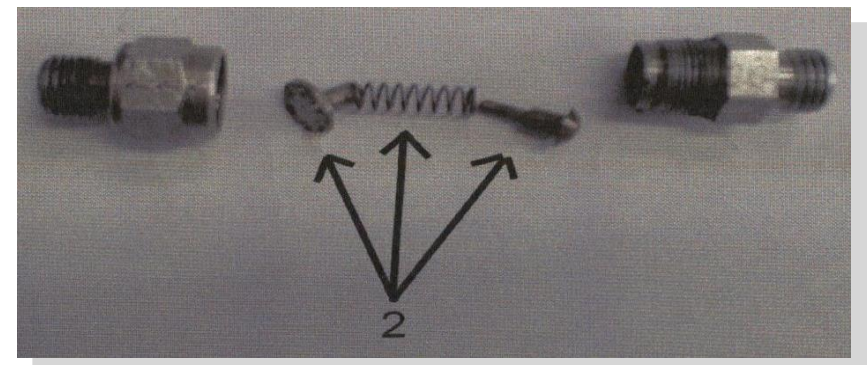
Working temperature : 95° C

Working pressure : 15 bar

Test pressure : 22.5 bar

Medium: Lubricating oil

Opening pressure : 1.0 bar



L23/30H-L28/32H Lubrication Oil System



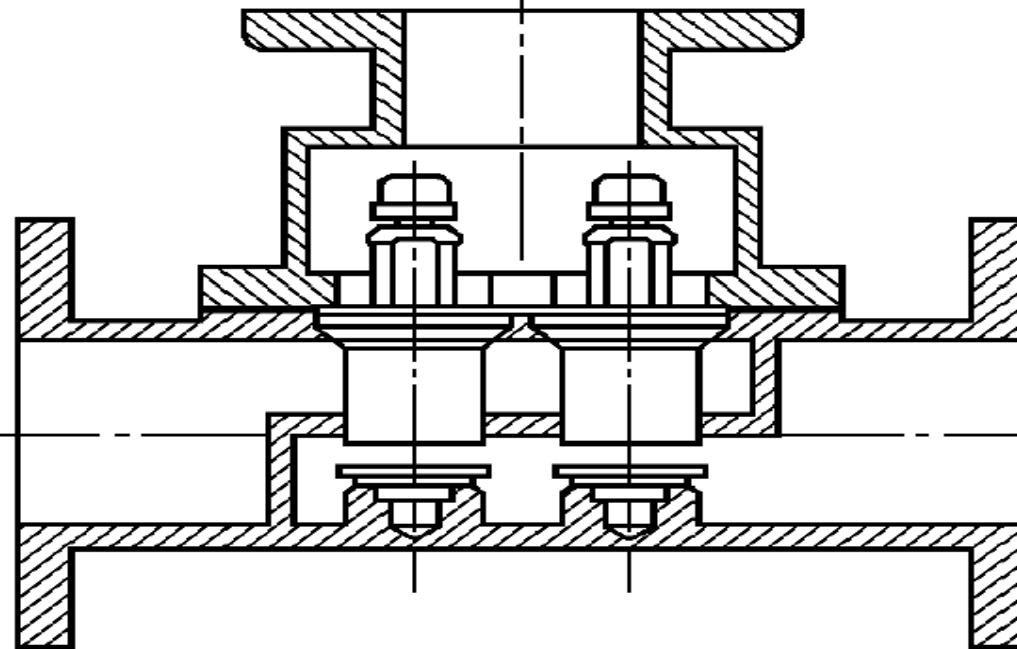
From pump

A

To filter

C

B To Cooler

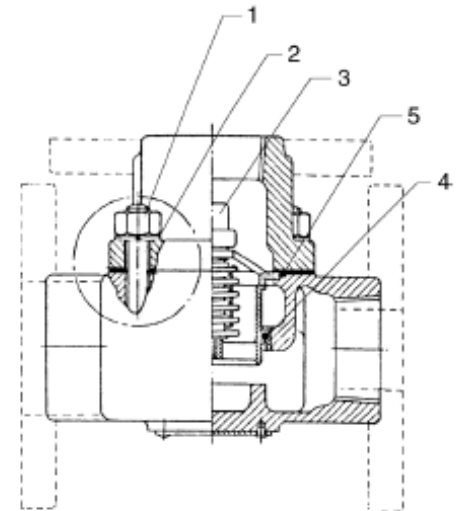


L23/30H-L28/32H Lubrication Oil System



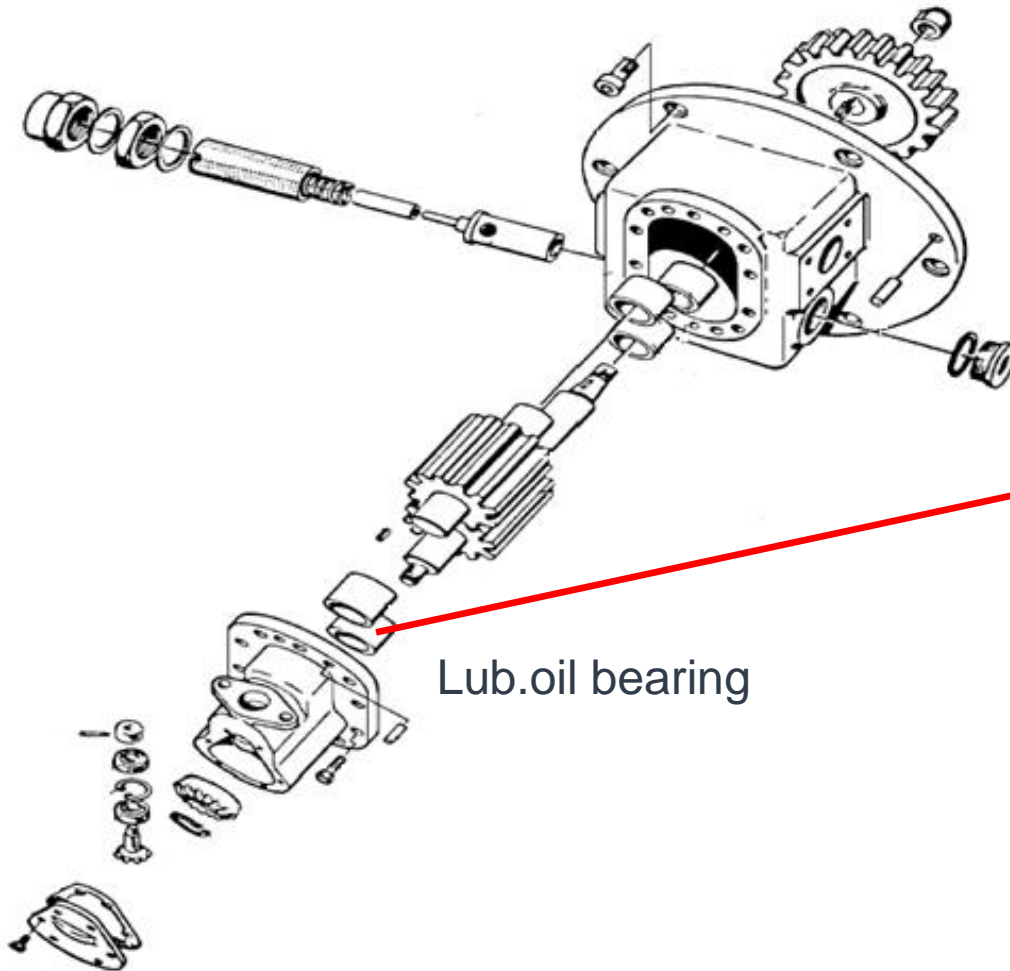
- 1) Remove nuts (1) and washers (2), 4 or 6 pcs.
- 2) Disconnect upper and lower part of the housing.
- 3) Remove the assembled elements (3) and the elements O-ring sealing.
- 4) Remove the gaskets between the upper and lower part of the housing.
- 5) The upper and lower part of the housing are thoroughly cleaned inside and on the gasket surfaces.
- 6) The sealing rings (4) for the elements in the housing are replaced and lubricated with a thin layer of copaslip.
- 7) Remount the assembled elements in the housing by wiggling these somewhat over side.
- 8) Upper and lower part of the housing are assembled with a new gasket (5), the nuts (1) are mounted and tightened "cross-wise".

Note: **After inspection or replacement of the elements the temperature is checked to ensure that the elements are working correctly.**

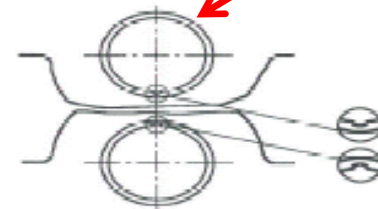
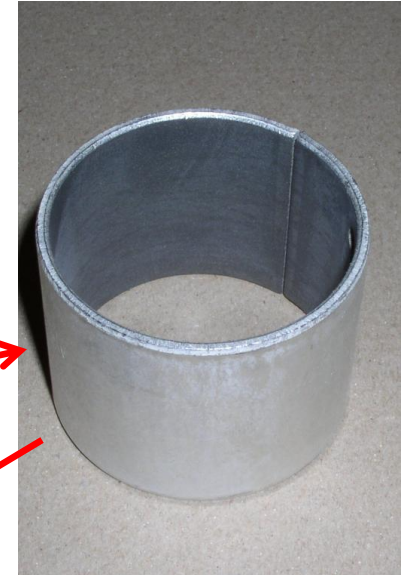


- | | |
|-----------|-------------------|
| 1 Nut | 2 Washer |
| 3 Element | 4 O-rings sealing |
| 5 Gasket | |

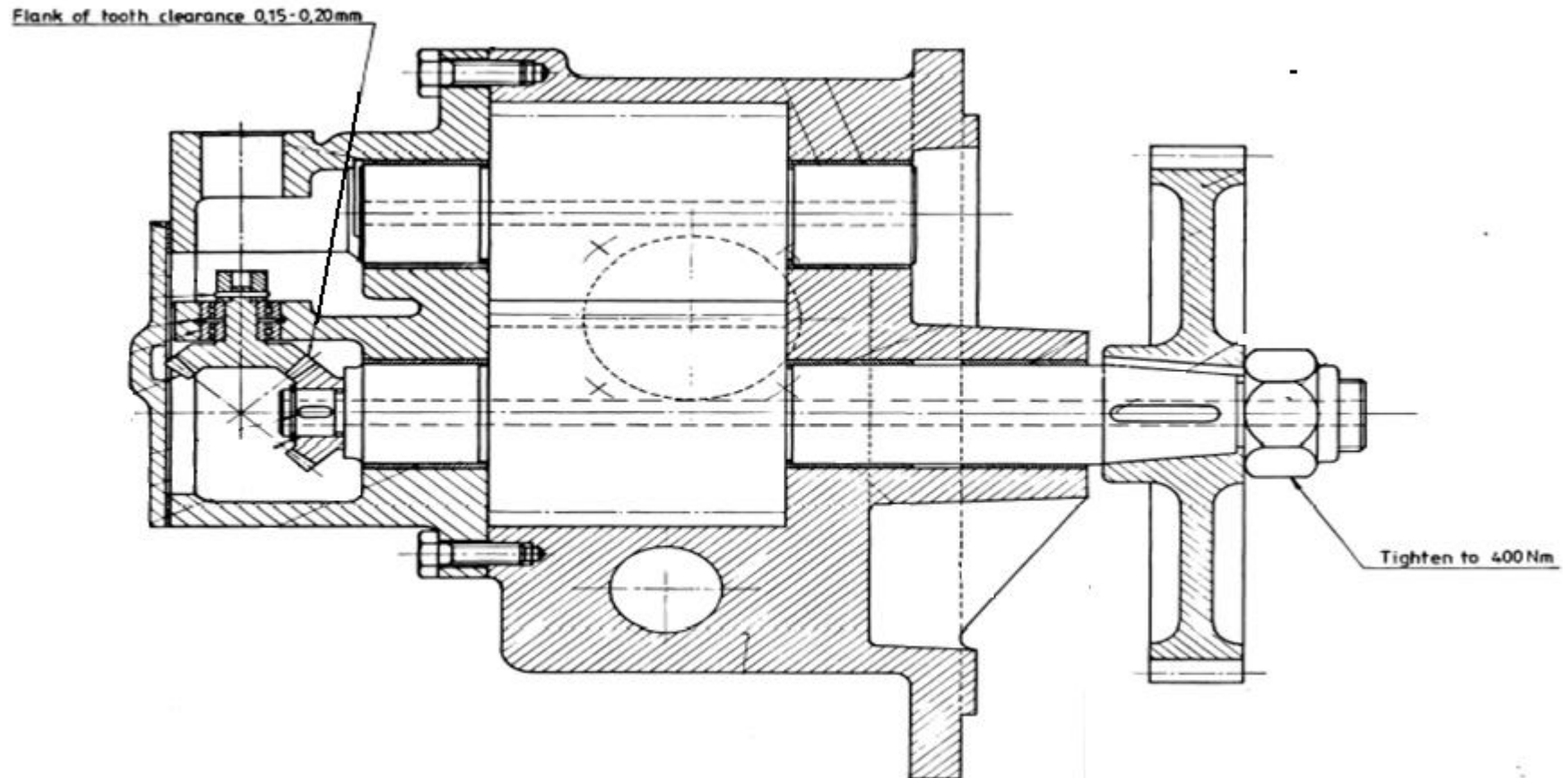
L23/30H-L28/32H Lubrication Oil System



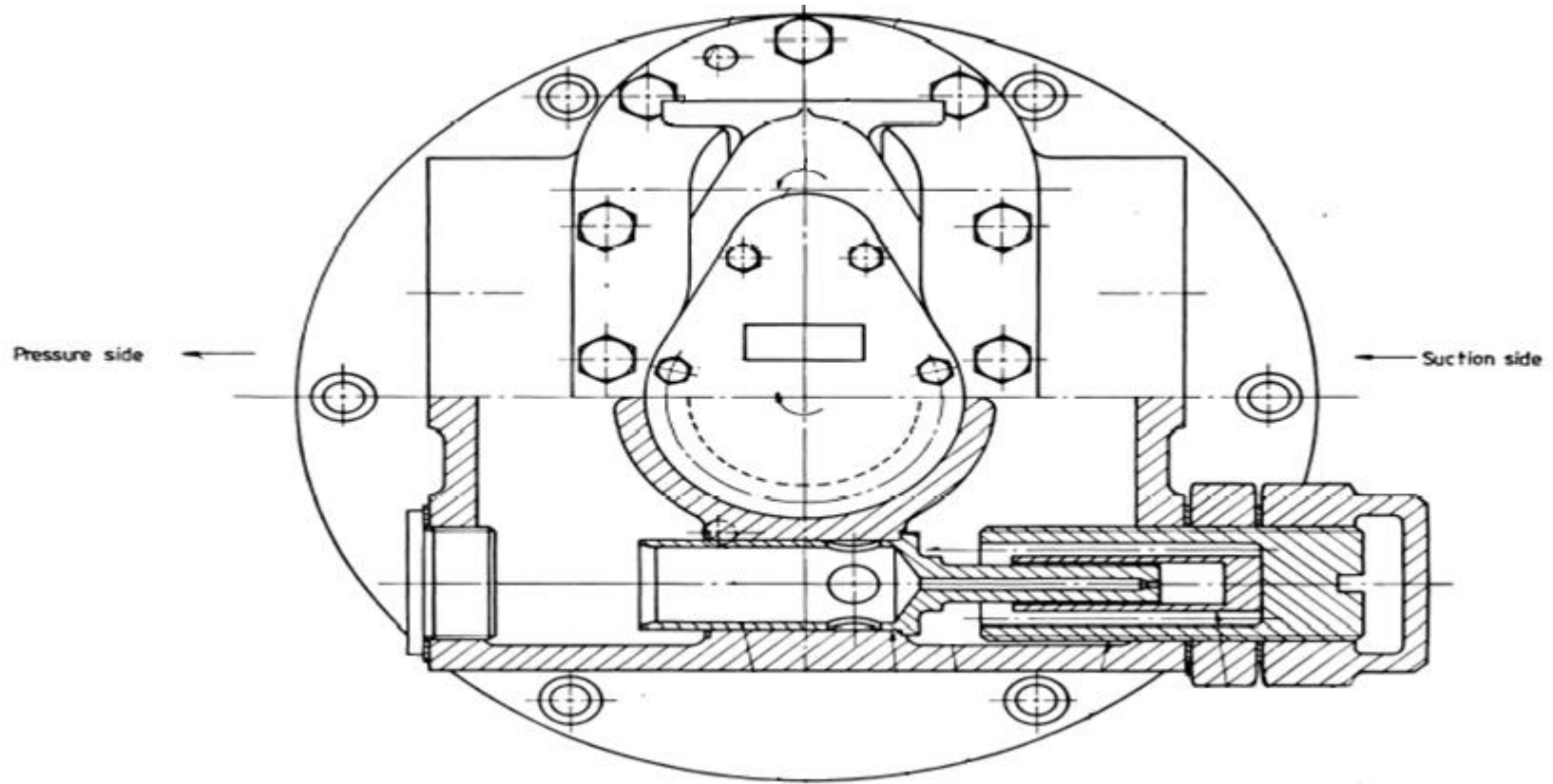
Lub.oil bearing



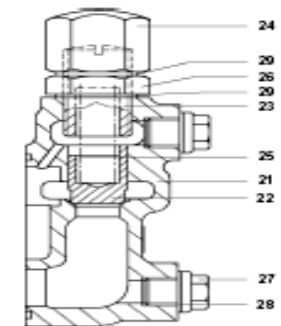
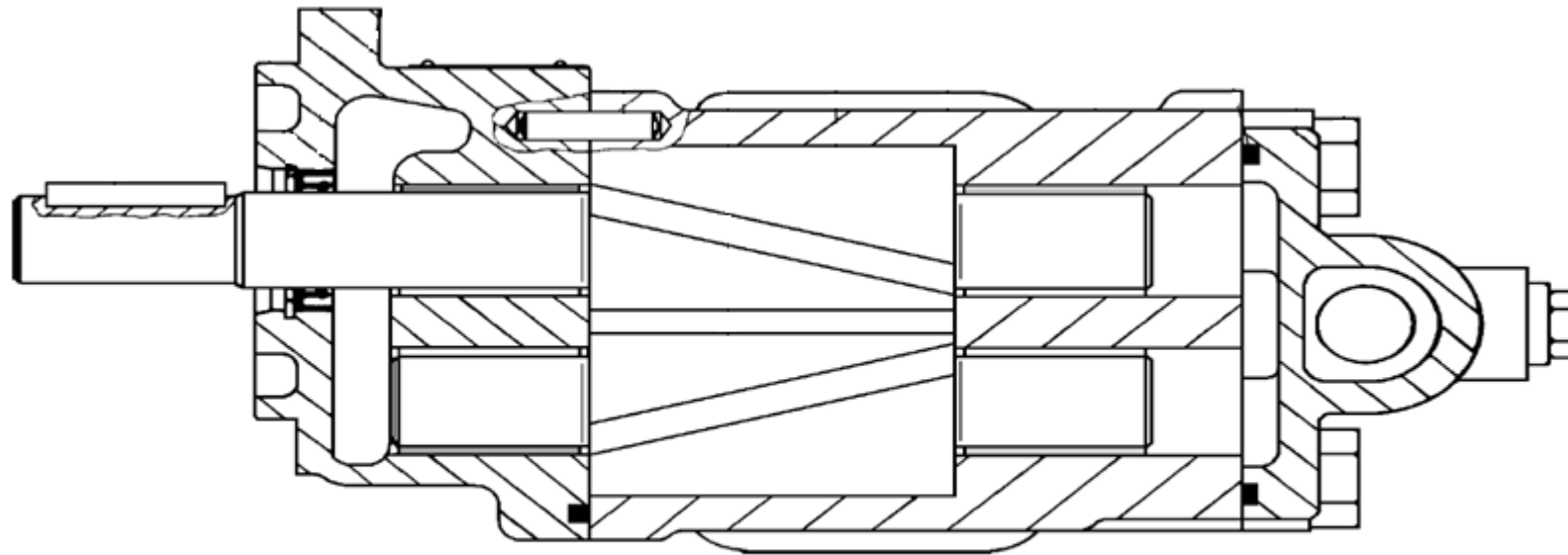
L23/30H-L28/32H Lubrication Oil System



L23/30H-L28/32H Lubrication Oil System



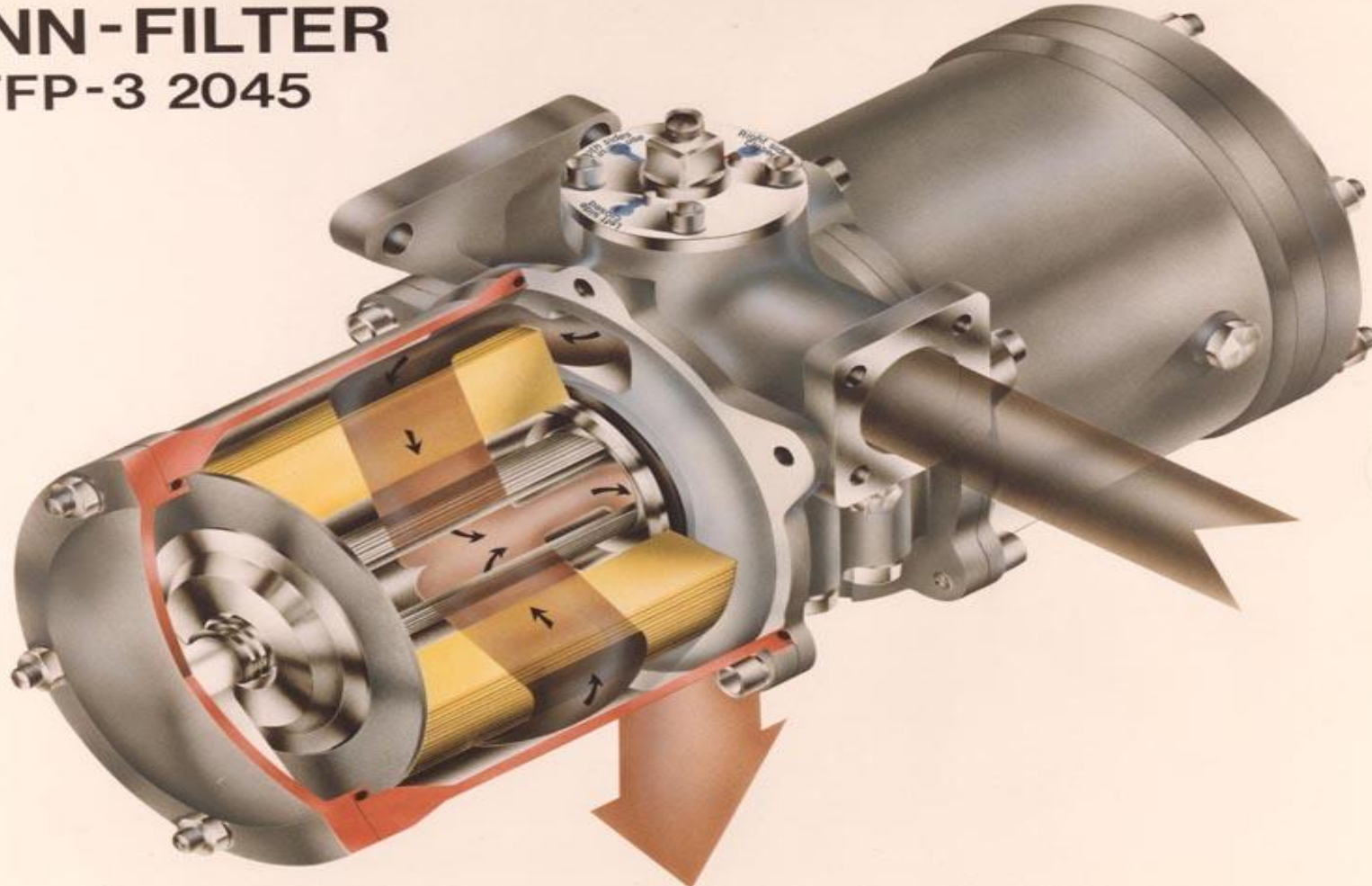
L23/30H-L28/32H Lubrication Oil System



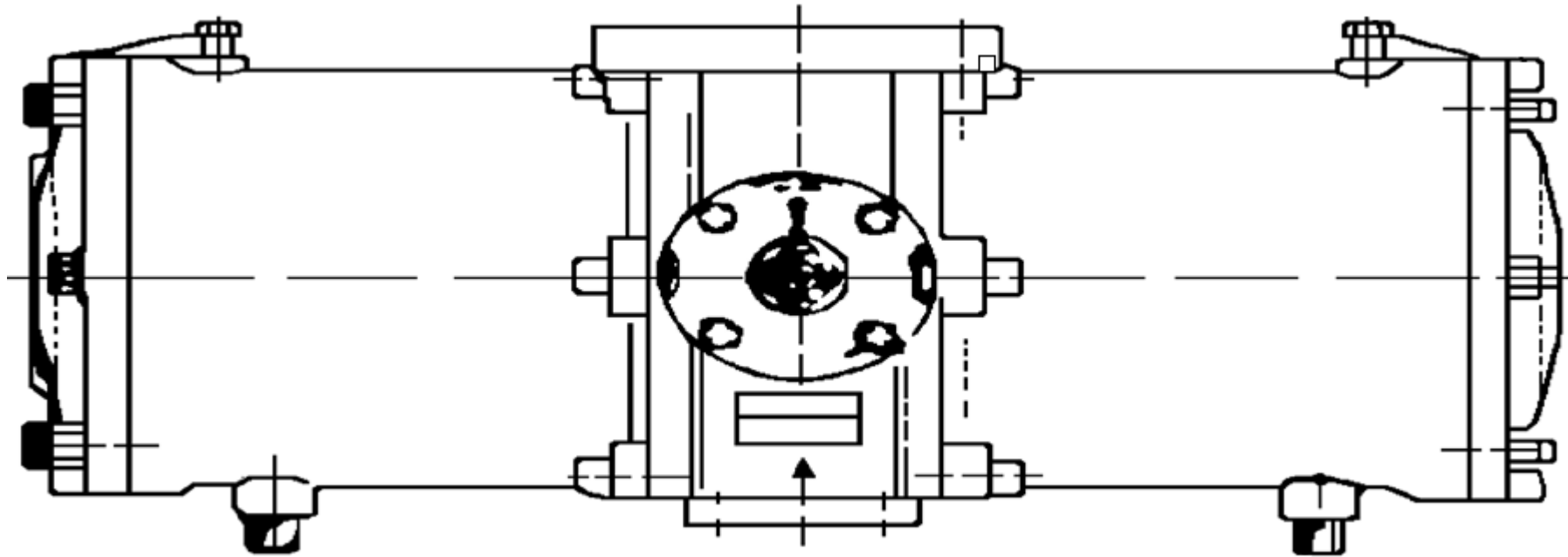
L23/30H-L28/32H Lubrication Oil Filter



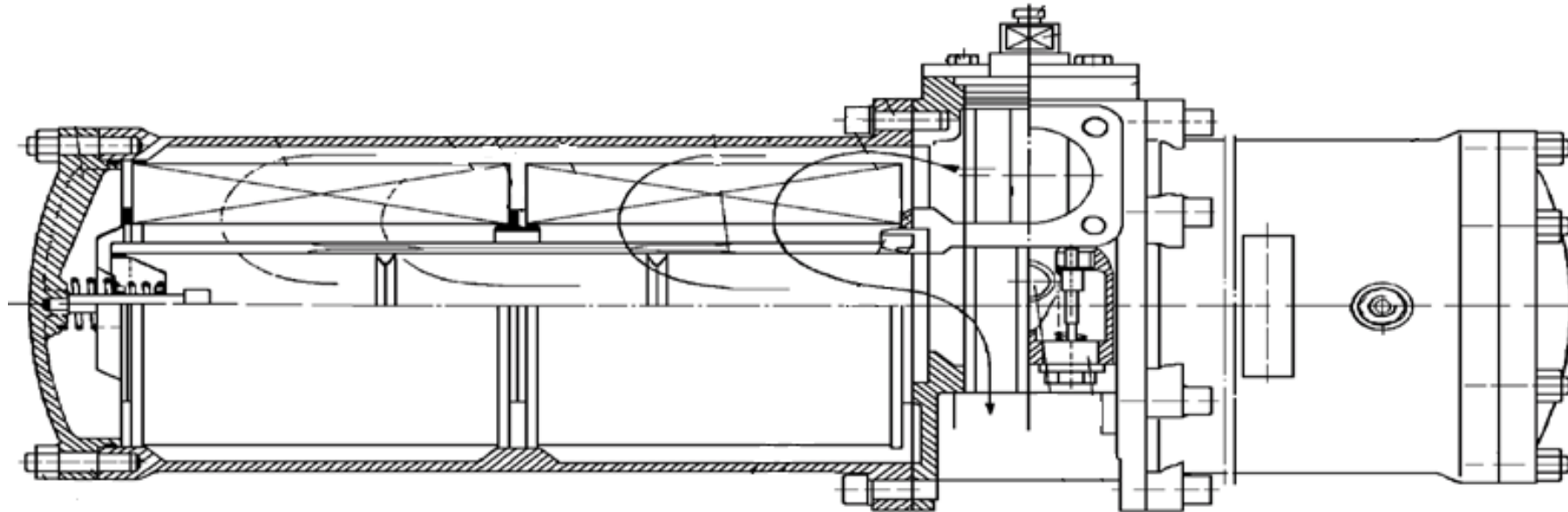
FINN-FILTER • FFP-3 2045



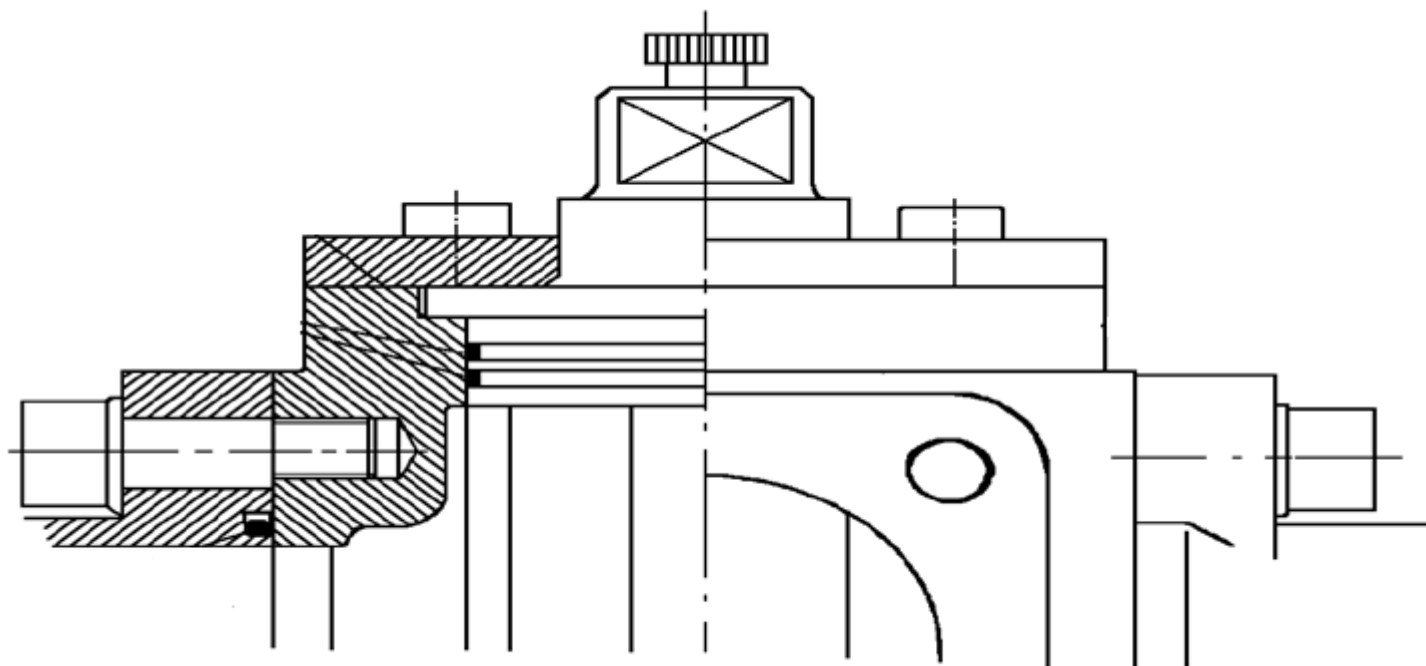
L23/30H-L28/32H Lubrication Oil System



L23/30H-L28/32H Lubrication Oil System



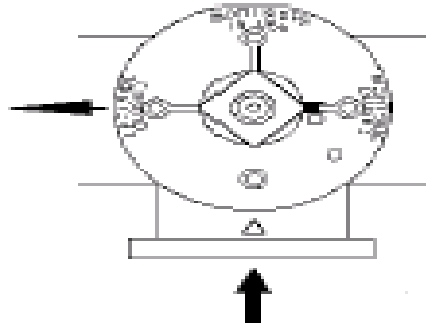
L23/30H-L28/32H Lubrication Oil System



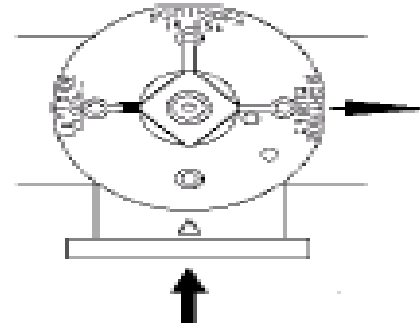
L23/30H-L28/32H Lubrication Oil System



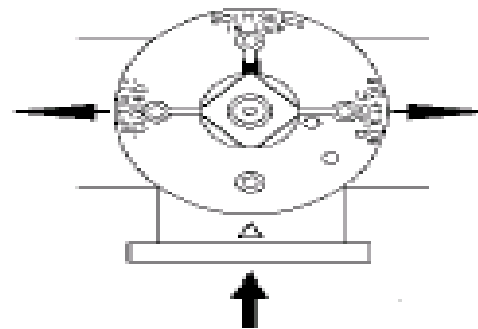
Three-way valve positions



Left hand filter camber in operation.



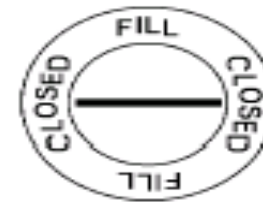
Right hand filter camber in operation.



Both filter camber in operation.

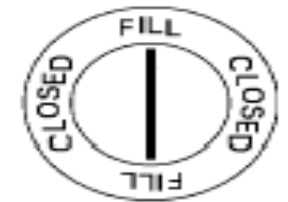
Fill-up valve positions

Operation



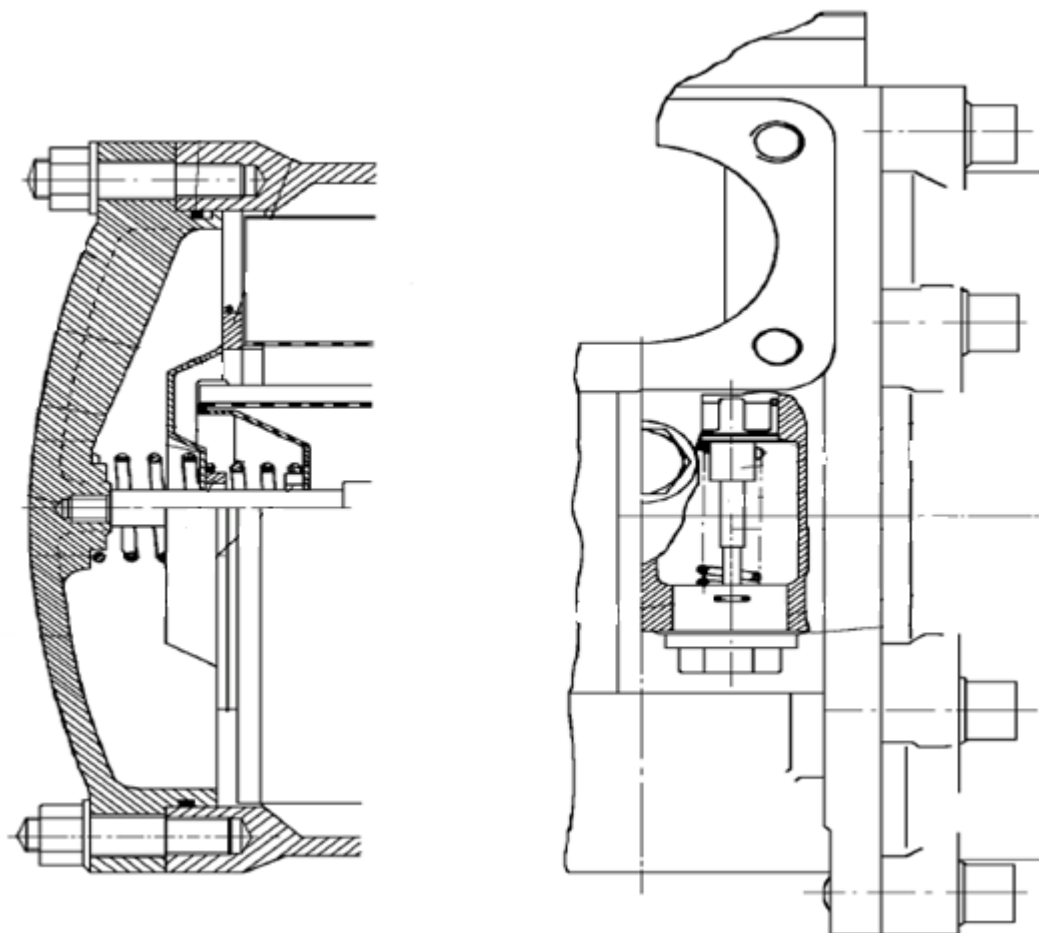
Switch in normal operation position

Changing over

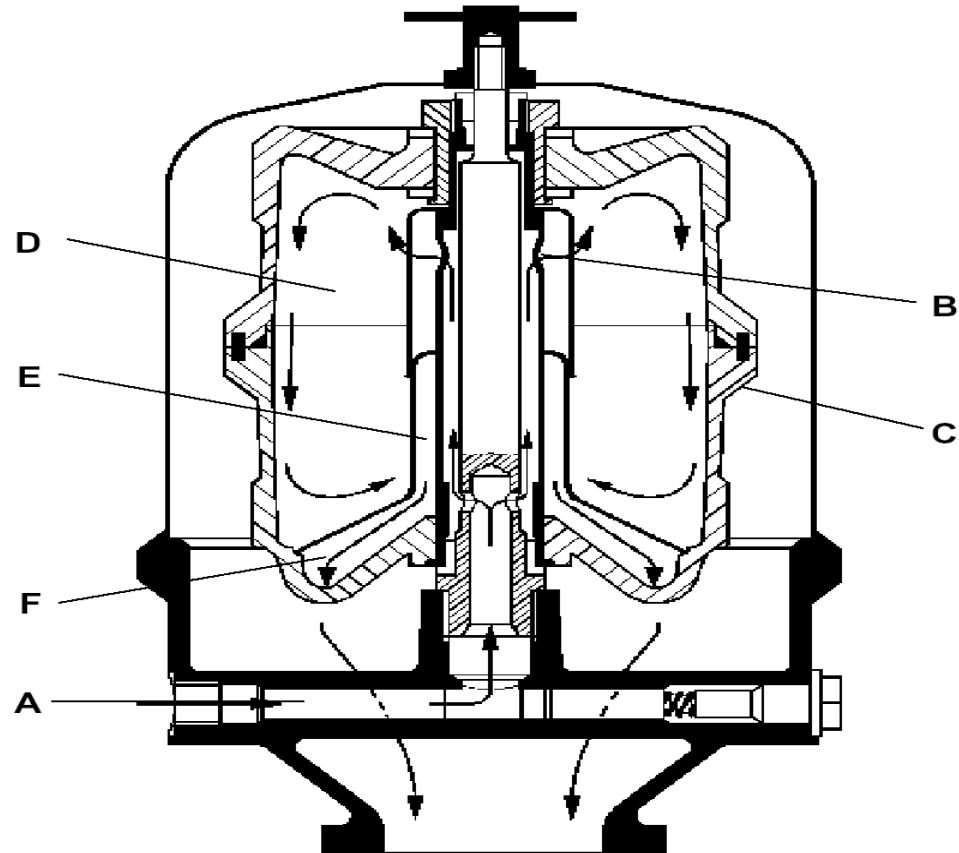


Switch in fill position

L23/30H-L28/32H Lubrication Oil System

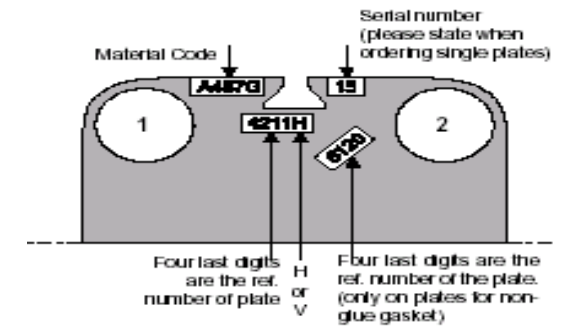
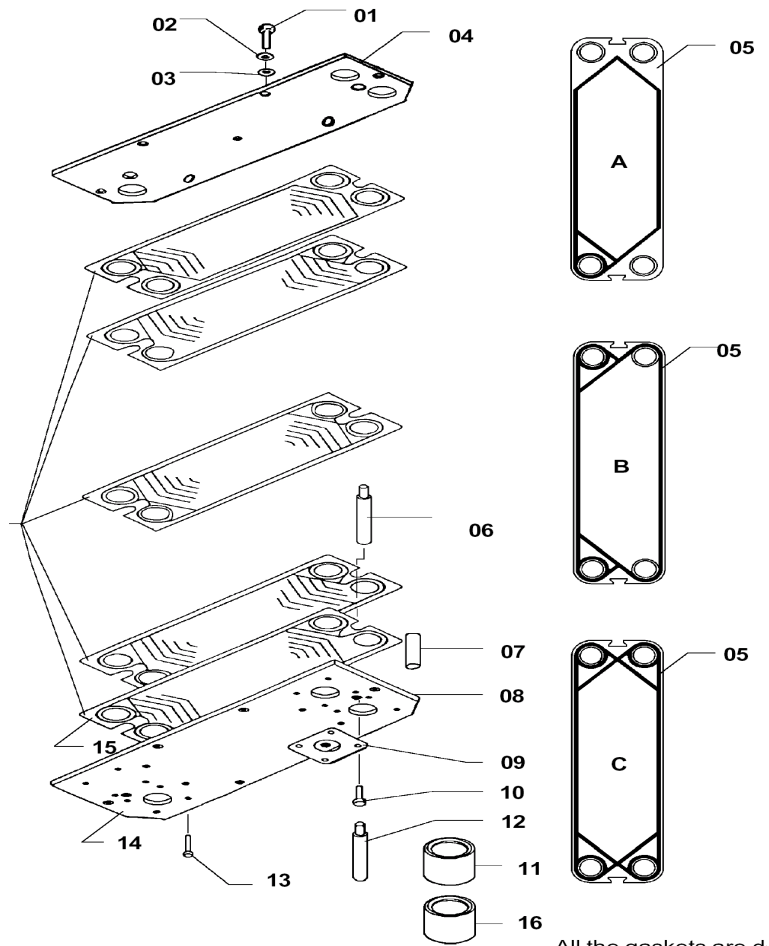


L23/30H-L28/32H Lubrication Oil System

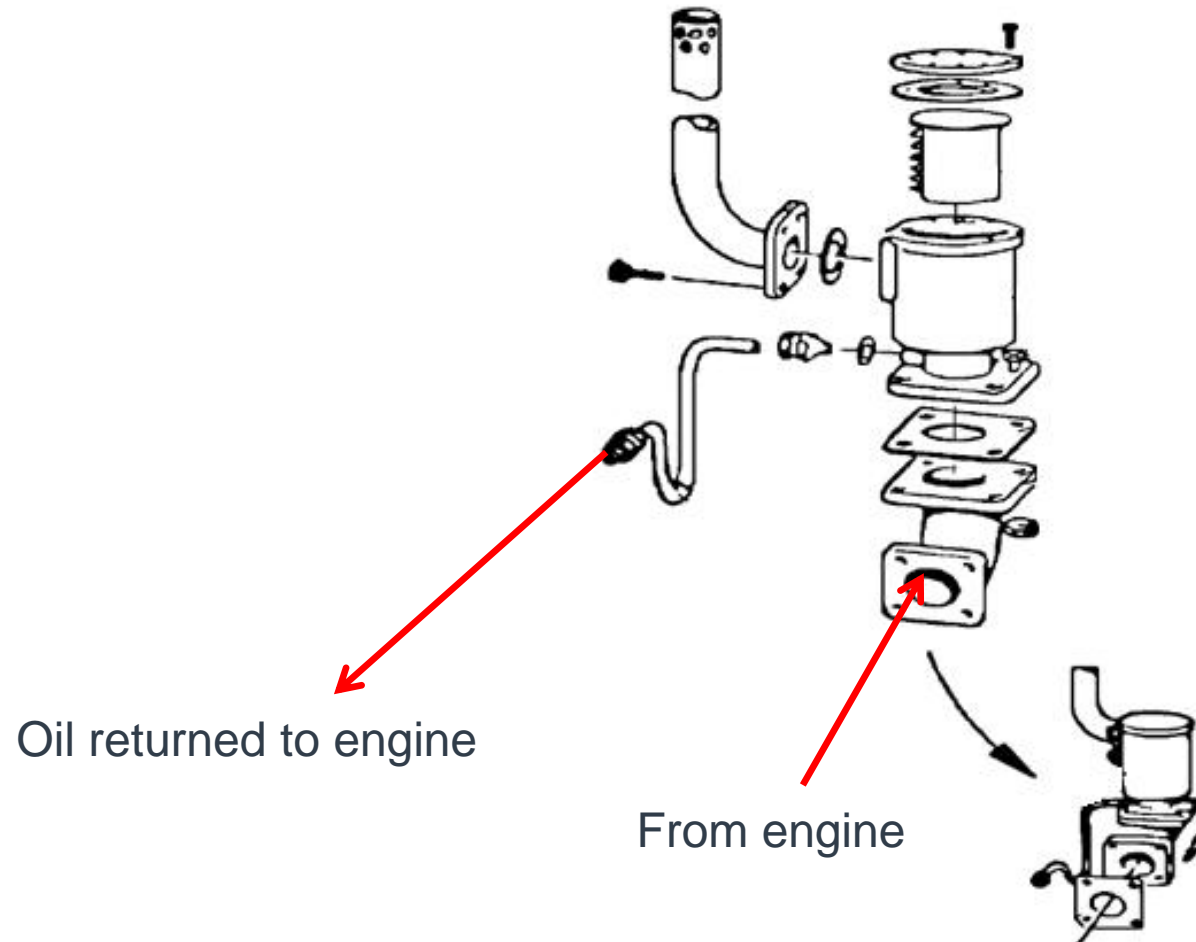


- | | | | |
|----------|---------------|----------|------------------|
| A | Cut-off valve | D | Cleaning chamber |
| B | Top | E | Strainer |
| C | Rotor | F | Drive chamber |

L23/30H-L28/32H Lubrication Oil System



L23/30H-L28/32H Lubrication Oil System



Disclaimer



All data provided in this document is non-binding.

This data serves informational purposes only and is especially not guaranteed in any way. Depending on the subsequent specific individual projects, the relevant data may be subject to changes and will be assessed and determined individually for each project. This will depend on the particular characteristics of each individual project, especially specific site and operational conditions.

Do you have any more questions?



Joe Bloggs

[Contact details]

Joe Bloggs

[Contact details]